


KENAN METAL

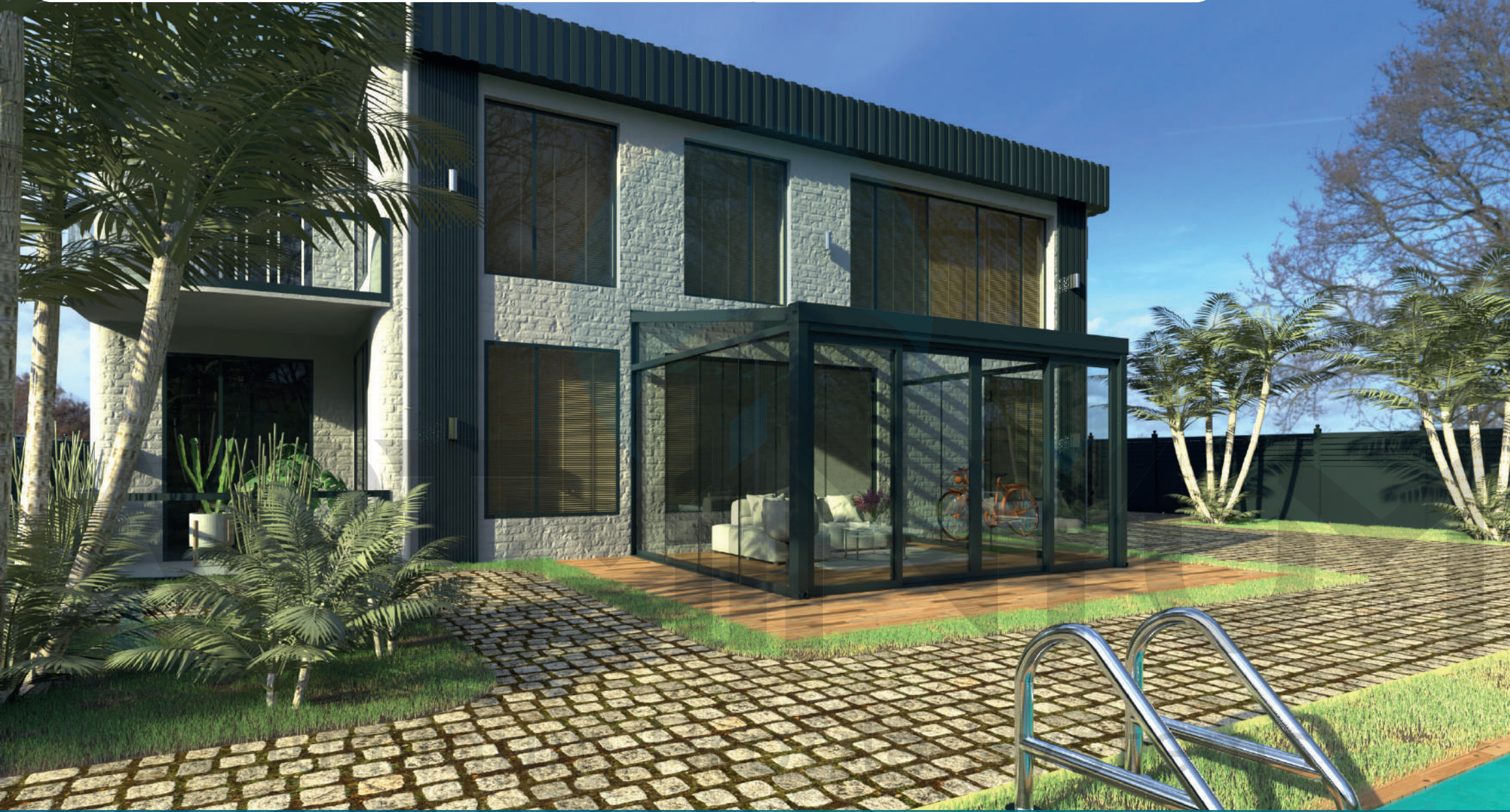

ARTINYUM

TUBA SÜRME CAM SİSTEMLERİ

TUBA SLIDING GLASS
SYSTEMS

TUBA SÜRME CAM SİSTEMLERİ

TUBA SLIDING GLASS SYSTEMS



TUBA SÜRME CAM SİSTEMLERİ, DAYANIKLI VE HAFİF OLAN ALÜMİNYUM ALAŞIMINDAN YAPILMIŞTIR. BU MALZEME, DIŞ HAVA KOŞULLARINA DAYANIKLIDIR VE UZUN ÖMÜRLÜDÜR.

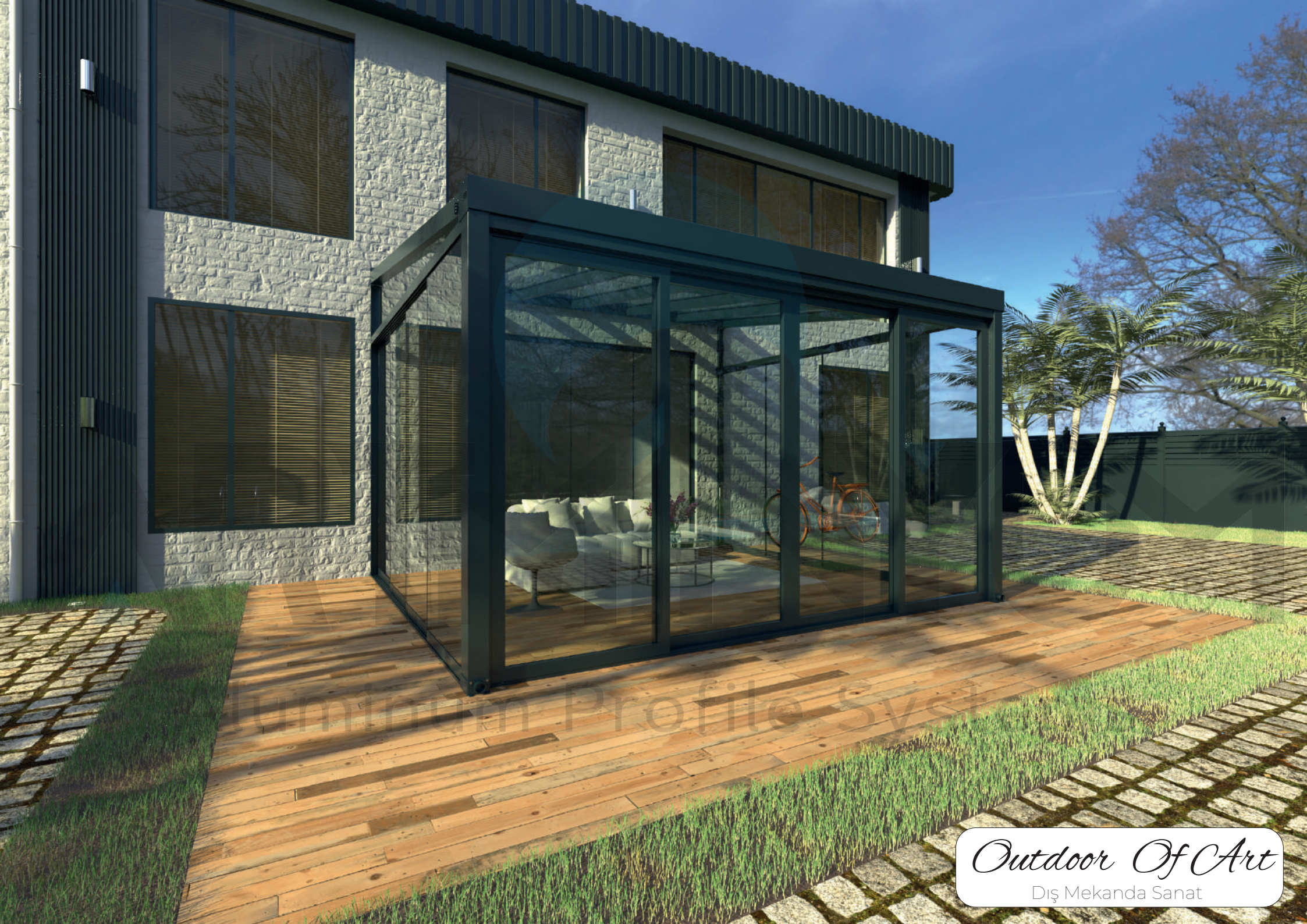
BU SİSTEMLER, İÇ MEKANLARDA BÖLME DUVARLAR, VERANDALAR VEYA TERASLAR İÇİN İDEALDİR. AYRICA TİCARİ BİNALARDA, OTELLERDE VE KONUTLARDA DA SIKÇA KULLANILIRLAR.

TUBA SÜRME CAM SİSTEMLERİ, GÜVENLİK VE YALITIM ÖZELLİKLERİYLE DONATILMIŞTIR. CAMLAR GENELLİKLE DARBELERE KARŞI DAYANIKLI VE İZOLE EDİLMİŞTİR, BÖYLECE ENERJİ TASARRUFU SAĞLARLAR VE DIŞ GÜRÜLTÜYÜ AZALTIRLAR.

TUBA SLIDING GLASS SYSTEMS ARE MADE OF DURABLE AND LIGHTWEIGHT ALUMINUM ALLOY. THIS MATERIAL IS RESISTANT TO EXTERNAL WEATHER CONDITIONS AND HAS A LONG LIFESPAN.

THESE SYSTEMS ARE IDEAL FOR INDOOR PARTITION WALLS, VERANDAS, OR TERRACES. THEY ARE ALSO FREQUENTLY USED IN COMMERCIAL BUILDINGS, HOTELS, AND RESIDENTIAL PROPERTIES.

TUBA SLIDING GLASS SYSTEMS ARE EQUIPPED WITH SECURITY AND INSULATION FEATURES. THE GLASSES ARE GENERALLY RESISTANT TO IMPACTS AND ISOLATED, THUS PROVIDING ENERGY SAVINGS AND REDUCING EXTERNAL NOISE.



Aluminum Profile System

Outdoor Of Art
Diş Mekanda Sanat



RAL RENK STANDARDINA GÖRE SEÇTİĞİNİZ TÜM RENKLER UYGULANABİLİR.

COLOURING OF YOUR CHOICE, ACCORDING TO THE RAL COLOUR STANDARD.



YAĞMUR VE RÜZGAR GİBİ HAVA ŞARTLARINA SON DERECE DAYANIKLIDIR.

IT IS EXTREMELY RESISTANT TO WEATHER CONDITIONS SUCH AS RAIN AND WIND.



MATERYAL // 6063 T5 ALÜMİNYUM, PASLANMAZ ÇELİK VE DERLİN.

MATERIALS // 6063 T5 ALUMINUM, STAINLESS STEEL AND DERLİN.

TUBA SÜRME CAM SİSTEMLERİ, KOLAY MONTAJ VE KULLANIM SAĞLAR. KULLANICILAR GENELLİKLE CAMLARI RAHA TLİKLA KAYDIRABİLİR VE TEMİZLEMESİ DE KOLAYDIR.

TUBA SÜRME CAM SİSTEMLERİ, MODERN VE ŞİK BİR GÖRÜNÜM SUNAR. GENİŞ CAM PANELLERİ SAYESİNDE İÇ MEKANLARA BOL MİKTARDA DOĞAL İŞİK GİRMESİNİ SAĞLARLAR VE AÇIK BİR ATMOSFER OLUŞTURURLAR.

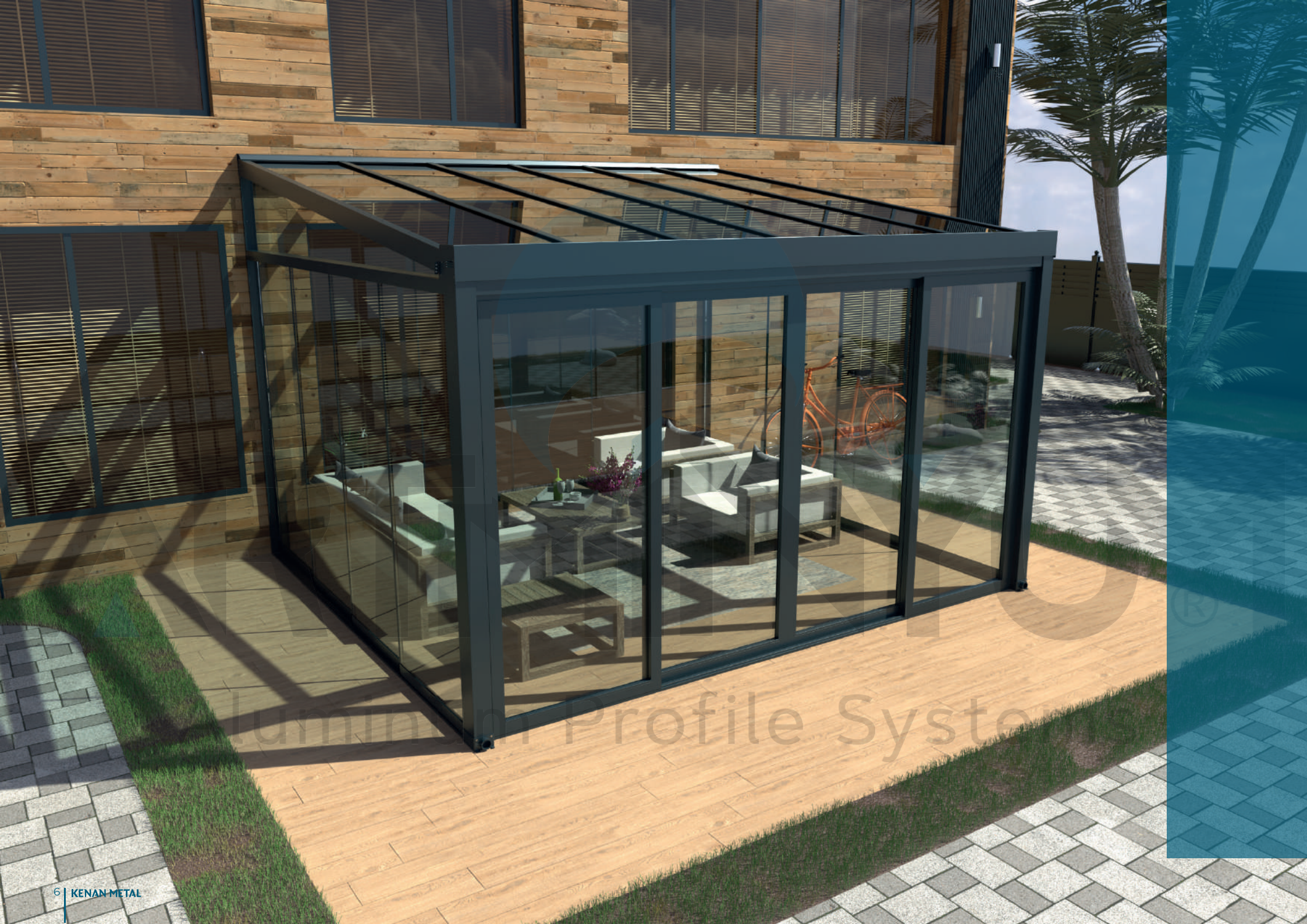
TUBA SÜRME CAM SİSTEMLERİ, DAYANIKLILIKLARI, ESTETİK GÖRÜNÜMLERİ VE İŞLEVSELLİKLERİYLE MODERN BİNA TASARIMINDA ÖNEMLİ BİR YER TUTARLAR VE BİRÇOK AVANTAJ SUNARLAR.

TUBA SLIDING GLASS SYSTEMS PROVIDE EASY INSTALLATION AND USAGE. USERS CAN OFTEN SLIDE THE GLASSES COMFORTABLY AND THEY ARE ALSO EASY TO CLEAN.

TUBA SLIDING GLASS SYSTEMS OFFER A MODERN AND STYLISH APPEARANCE. THANKS TO THE LARGE GLASS PANELS, THEY ALLOW PLENTY OF NATURAL LIGHT TO ENTER INDOOR SPACES AND CREATE AN OPEN ATMOSPHERE.

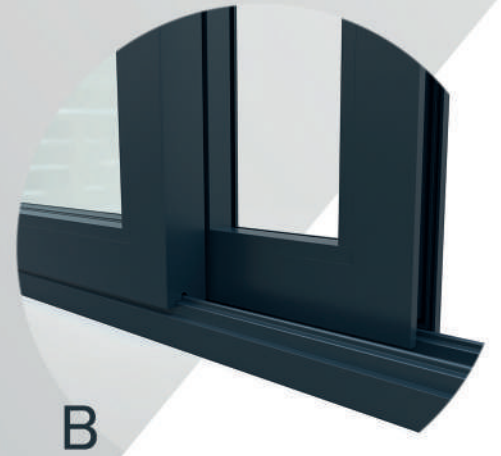
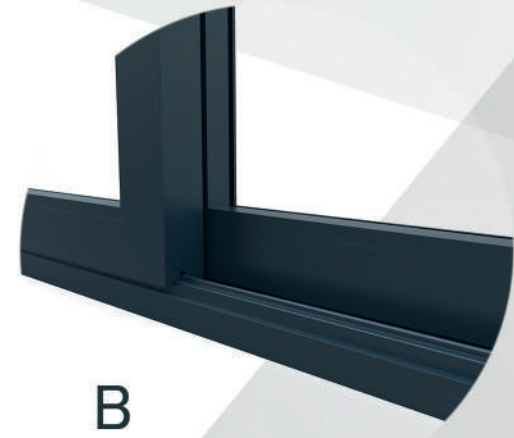
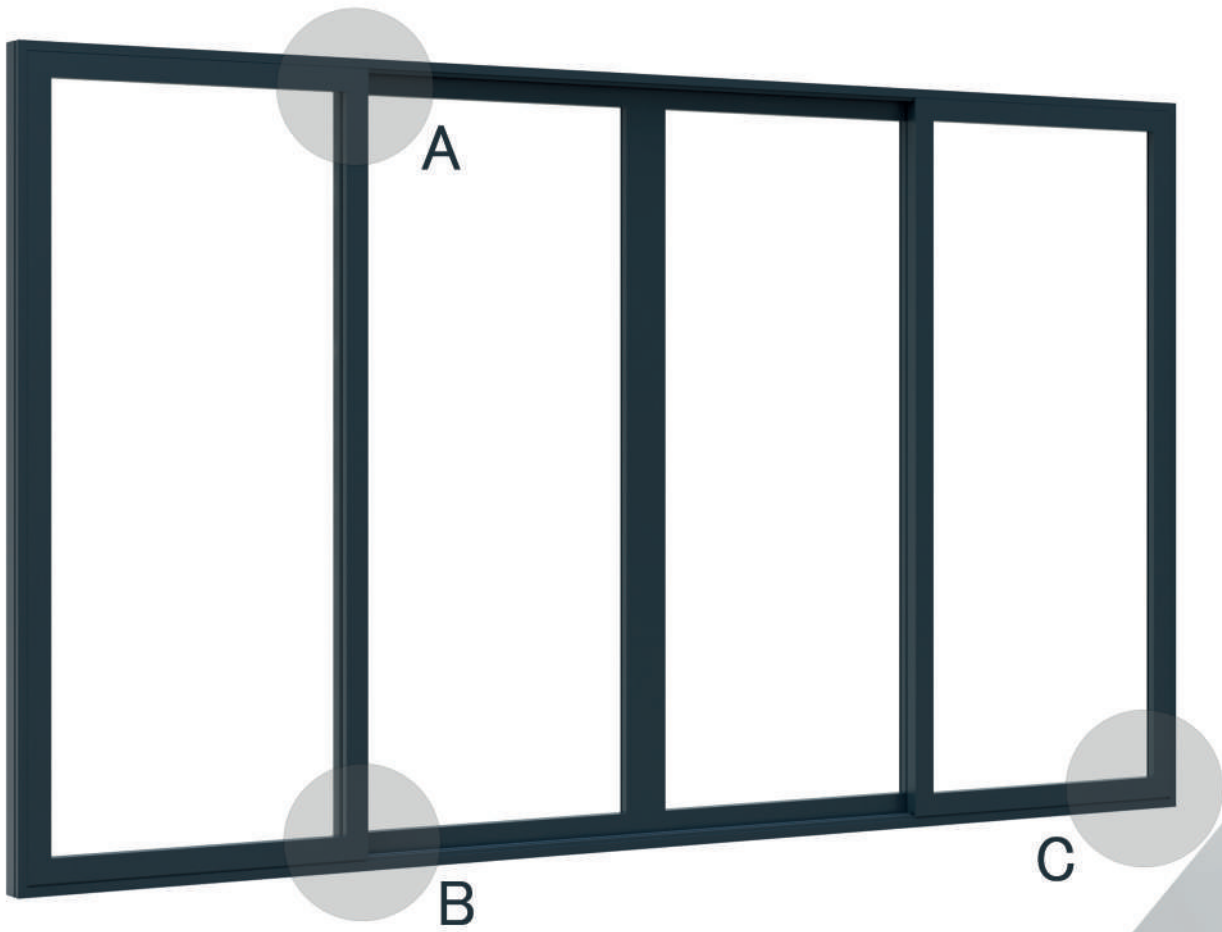
TUBA SLIDING GLASS SYSTEMS HOLD AN IMPORTANT PLACE IN MODERN BUILDING DESIGN WITH THEIR DURABILITY, AESTHETIC APPEAL, AND FUNCTIONALITY, PROVIDING MANY ADVANTAGES.

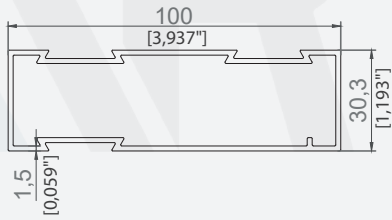
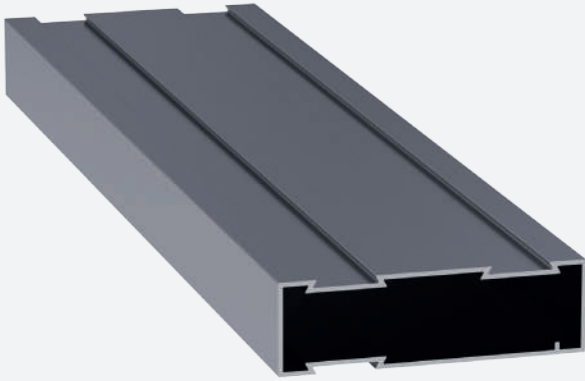




Luminor Profile System

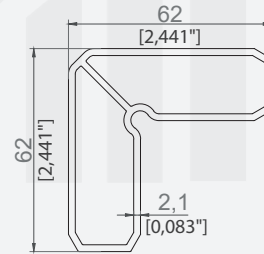
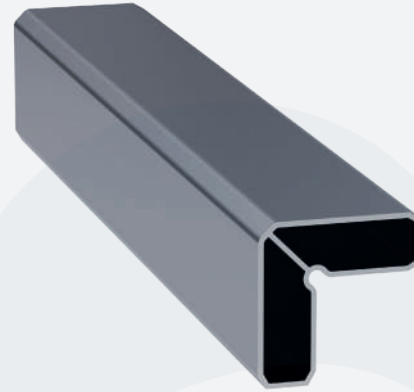






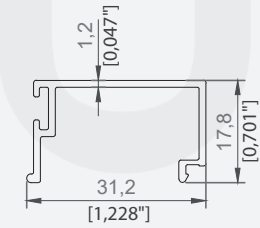
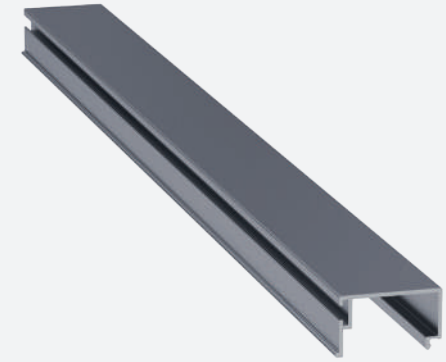
KASA PROFİLİ
FRAME PROFILE

| | |
|--------------------------|-------------------------|
| ÜRÜN KODU / PRODUCT CODE | 2407 |
| AĞIRLIK / WEIGHT | 1,152 KG/M 2,54 LB/M |



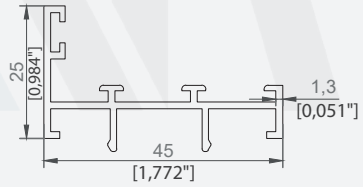
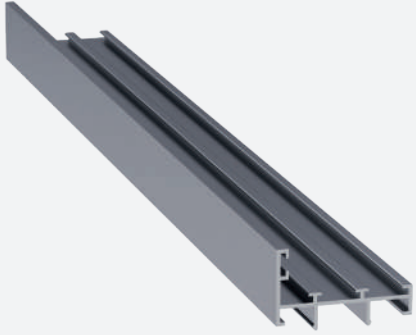
ÇERÇEVE KÖŞE TAKOZU BAĞLANTI PROFİLİ
FRAME CORNER WEDGE CONNECTION PROFILE

| | |
|--------------------------|--------------------------|
| ÜRÜN KODU / PRODUCT CODE | 2971 |
| AĞIRLIK / WEIGHT | 1,442 KG/M 3,179 LB/M |



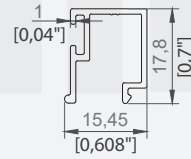
GENİŞ CAM ÇİTA PROFİLİ (9mm Cam)
WIDE GLASS BEAD PROFILE (9mm Glass)

| | |
|--------------------------|--------------------------|
| ÜRÜN KODU / PRODUCT CODE | 2413 |
| AĞIRLIK / WEIGHT | 0,236 KG/M 0,520 LB/M |



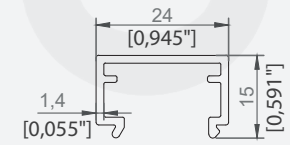
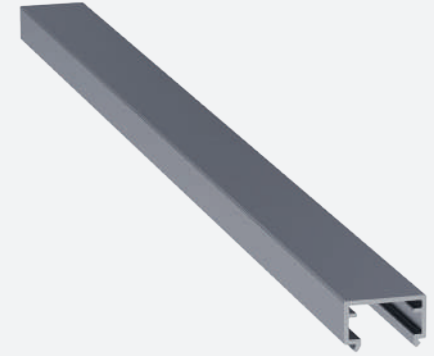
SABİT PANEL YAN ÇERÇEVE PROFİLİ
FIXED PANEL SIDE FRAME PROFILE

| | |
|--------------------------|--------------------------|
| ÜRÜN KODU / PRODUCT CODE | 2415 |
| AĞIRLIK / WEIGHT | 0,412 KG/M 0,908 LB/M |



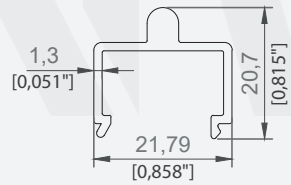
DAR CAM ÇİTA PROFİLİ (24mm Cam)
NARROW GLASS BEAD PROFILE (24mm Glass)

| | |
|--------------------------|--------------------------|
| ÜRÜN KODU / PRODUCT CODE | 2412 |
| AĞIRLIK / WEIGHT | 0,163 KG/M 0,359 LB/M |



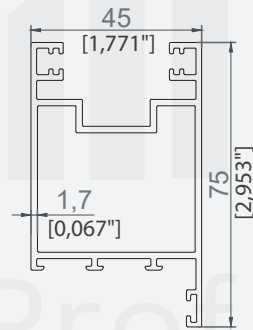
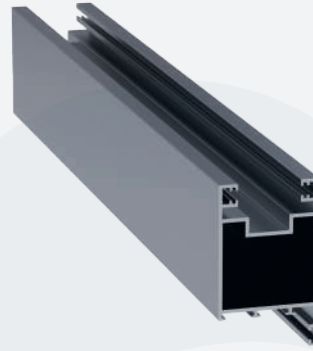
ÜST RAY PROFİLİ
TOP RAIL PROFILE

| | |
|--------------------------|--------------------------|
| ÜRÜN KODU / PRODUCT CODE | 2410 |
| AĞIRLIK / WEIGHT | 0,233 KG/M 0,514 LB/M |



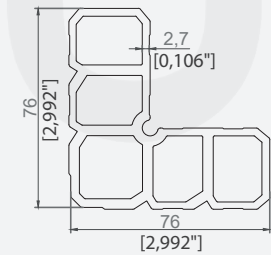
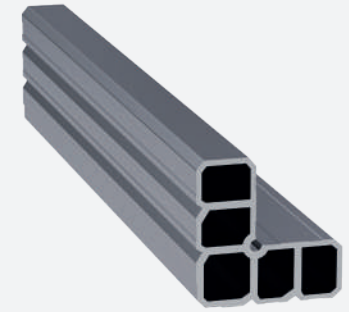
ALT RAY TEKER PROFİLİ
BOTTOM RAIL WHEEL PROFILE

| | |
|--------------------------|--------------------------|
| ÜRÜN KODU / PRODUCT CODE | 2411 |
| AĞIRLIK / WEIGHT | 0,252 KG/M 0,556 LB/M |



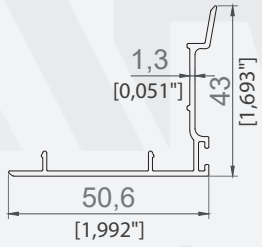
CAM KANAT PROFİLİ
GLASS PANEL PROFILE

| | |
|--------------------------|--------------------------|
| ÜRÜN KODU / PRODUCT CODE | 2408 |
| AĞIRLIK / WEIGHT | 1,260 KG/M 2,778 LB/M |



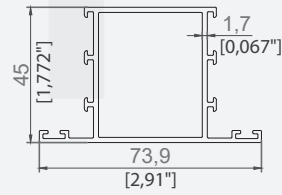
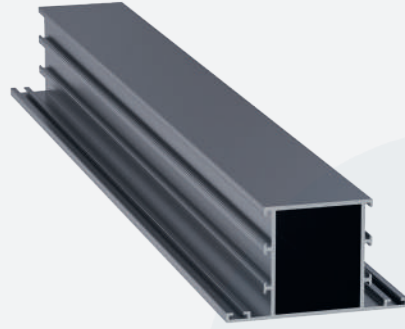
CAM PANEL KÖŞE TAKOZU
GLASS PANEL CORNER WEDGE

| | |
|--------------------------|--------------------------|
| ÜRÜN KODU / PRODUCT CODE | 2972 |
| AĞIRLIK / WEIGHT | 3,436 KG/M 7,575 LB/M |



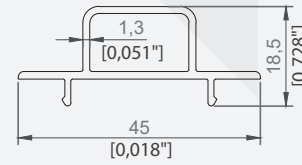
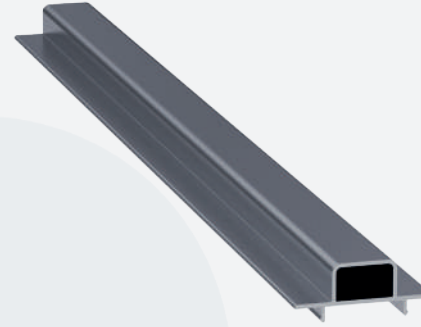
ÇERÇEVE KENET PROFİLİ
FRAME BEAD PROFILE

| | |
|--------------------------|--------------------------|
| ÜRÜN KODU / PRODUCT CODE | 2409 |
| AĞIRLIK / WEIGHT | 0,388 KG/M 0,855 LB/M |



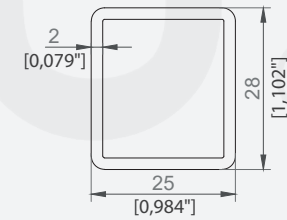
ORTA KAYIT PROFİLİ
GLASS MIDDLE PROFILE

| | |
|--------------------------|--------------------------|
| ÜRÜN KODU / PRODUCT CODE | 2973 |
| AĞIRLIK / WEIGHT | 1,038 KG/M 2,288 LB/M |



KAPAK PROFİLİ
COVER PROFILE

| | |
|--------------------------|--------------------------|
| ÜRÜN KODU / PRODUCT CODE | 2414 |
| AĞIRLIK / WEIGHT | 0,344 KG/M 0,758 LB/M |



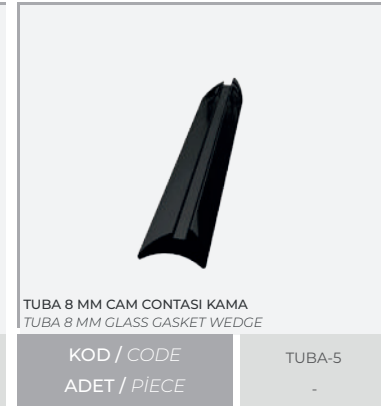
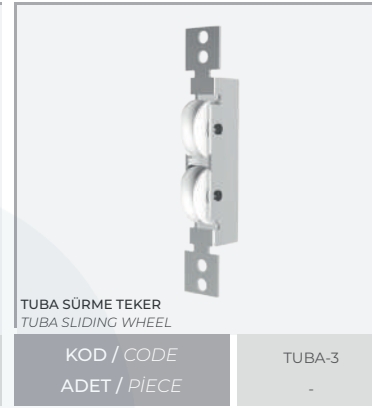
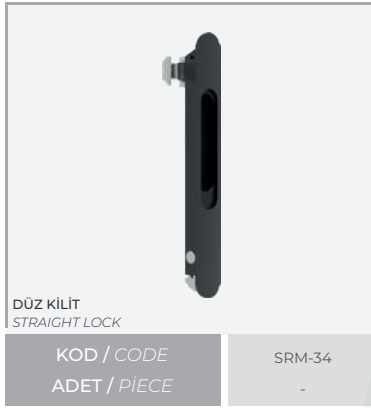
GENİŞ ÜST RAY PROFİLİ
WIDE TOP RAIL PROFILE

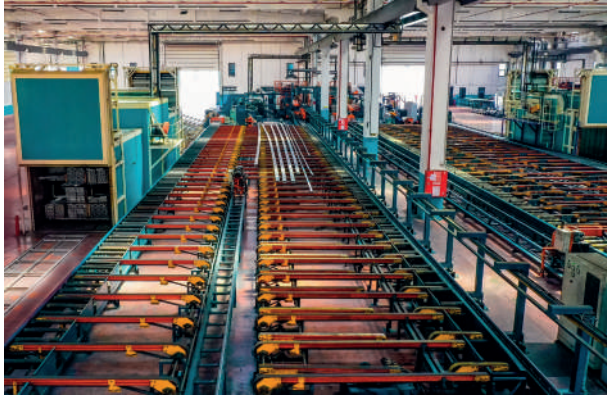
| | |
|--------------------------|--------------------------|
| ÜRÜN KODU / PRODUCT CODE | 2974 |
| AĞIRLIK / WEIGHT | 0,518 KG/M 1,142 LB/M |



TUBA SÜRME CAM SİSTEMİ
AKSESUAR TAKIMI

TUBA SLIDING GLASS SYSTEM
ACCESSORY SET





Biz kimiz ?

ÜSTÜN KALİTELİ ALÜMİNYUM PROFİL ÜRETİMİNİ HER GEÇEN GÜN ARTAN STANDARTLARLA DEVAM ETTİREN KENAN METAL A.Ş. ÜLKEMİZİN ÖNDE GELEN ALÜMİNYUM FABRİKALARINDAN BİRİDİR. MUTLAK MÜŞTERİ VE ÇALIŞAN MEMNUNİYETİ PRENSİBİYLE ÜRETİM YAPAN KENAN METAL A.Ş., TENTE PERGOLA, İNŞAAT VE ÖZEL PROFİLLER GİBİ FARKLI SEKTÖRLERİN MEVCUT VE GELECEKTEKİ BEKLENTİLERİNİ KARŞILAYAN, ÇEVREYLE DOST ÜRETİM SİSTEMLERİNİ BENİMSEYEN, KÜRESEL ETKİLEŞİMLERİ YAKINDAN TAKİP EDEREK SÜREKLİ YENİLENEN, ÇAĞDAŞ BİR VİZYONLA GELİŞİYOR. ÜRÜN-KALİTE ÇİTASININ SÜREKLİ YÜKSEKİLMESİ, ÜRÜN YELPAZESİNİN GELİŞTİRİLMESİ, YENİ ÜRÜNLERİN TASARIMI, KULLANIM ALANLARININ ARTTIRILMASI İÇİN SÜREKLİ OLARAK ÇALIŞAN AR-GE BÖLÜMÜYLE GÖZ DOLDURAN KENAN METAL A.Ş., KALİTESİ GÜVENİLİRLİĞİ, KULLANDIĞI TEKNOLOJİ VE ÖZEL ÇÖZÜMLER ÜRETME GÜCÜYLE PAZAR PAYINI SÜREKLİ GENİŞLETİYOR.

KENAN METAL A.Ş., ALÜMİNYUM BAZLI ÜRÜNLERİN KALİTELERİNİ ARTTIRARAK VE KULLANIM ALANLARINI YAYGINLAŞTIRARAK DOĞAL VE ESTETİK MEKANLARIN YARATILMASINA DA ÖNCÜLÜK EDİYOR. HER YAPI İÇİN KENDİNE ÖZGÜ ÜSTÜN NİTELİKLİ VE İLERİ TEKNOLOJİ GEREKTİREN ÇAĞDAŞ ÇÖZÜMLER SUNAN KENAN METAL A.Ş., ESNEK YAKLAŞIMLARI ÜSTÜN HİZMET KALİTESİ VE FİYAT-KALİTE DENGESİYLE KÜRESEL PAZARDA SÖZ SAHİBİ BİR KURUM OLMA YOLUNDA EMİN ADIMLARLA İLERLİYOR.

WHO ARE WE?

KENAN METAL IS ONE OF THE LEADING ALUMINUM FACTORIES OF OUR COUNTRY WHICH CONTINUES TO PRODUCE HIGH QUALITY ALUMINUM PROFILES WITH INCREASING STANDARDS EACH PASSING DAY. KENAN METAL WHICH MAKES PRODUCTION WITH ABSOLUTE CUSTOMER AND EMPLOYEE SATISFACTION PRINCIPLE, DEVELOPS WITH A MEDERN VISION THAT MEETS CURRENT AND FUTURE EXPECTATIONS OF DIFFERENT SECTORS SUCH AS AWNING PERGOLA, CONSTRUCTION AND SPECIAL PROFILES, ADOPTS ENVIRONMENTALLY FRIENDLY PRODUCTION SYSTEMS, RENEWS ITSELF CONSTANTLY BY FOLLOWING GLOBAL INTERACTIONS CLOSELY.

KENAN METAL WHICH MAKES A STRONG IMPRESSION WITH ITS R&D DEPARTMENT WORKING CON STANTLY FOR RAISING PRODUCT-QUALITY LEVEL, IMPROVING PRODUCT RANGE, DESIGNING NEW PRODUCTS, INCREASING USAGE AREAS, EXPANDS ITS MARKET SHARE CONSTANTLY WITH ITS QUALITY, CREDIBILITY TECHNOLOGY USED AND POWER TO PRODUCE SPECIAL SOLUTIONS KENAN METAL IS ALSO LEADING CREATION OF NATURAL AND AESTHETIC SPACES BY INCREASING QUALITY OF ALUMINUM-BASED PRODUCTS AND EXPANDING USAGE AREAS. KENAN METAL WHICH OFFERS ITS UNIQUE, SUPERIOR AND MODERN SOLUTIONS REQUIRING ADVANCED TECHNOLOGY FOR EVERY STRUCTURE, IS MOVING CONFIDENTLY ON ITS WAY TO BECAME A PROMISING COMPANY IN GLOBAL MARKET WITH ITS FLEXIBLE APPROACHES, SUPERIOR SERVICE QUALITY AND PRICE-QUALITY BALANCE.



KENAN METAL®





KENANMETAL.COM | INFO@KENANMETAL.COM | +90 212 485 60 35

GENEL MERKEZ : İOSB MH. ATATÜRK BLV. MAHMUT TORUN İŞ MERKEZİ NO: 54 KAT:1 34490 İKİTELLİ OSB / BAŞAKŞEHİR / İSTANBUL
FABRİKA : VELİMEŞE MAHALLESİ, KANDİL CADDESİ, 329 SOKAK, DIŞ KAPI NO:7 ERGENE / TEKİRDAĞ

