

  
KENAN METAL

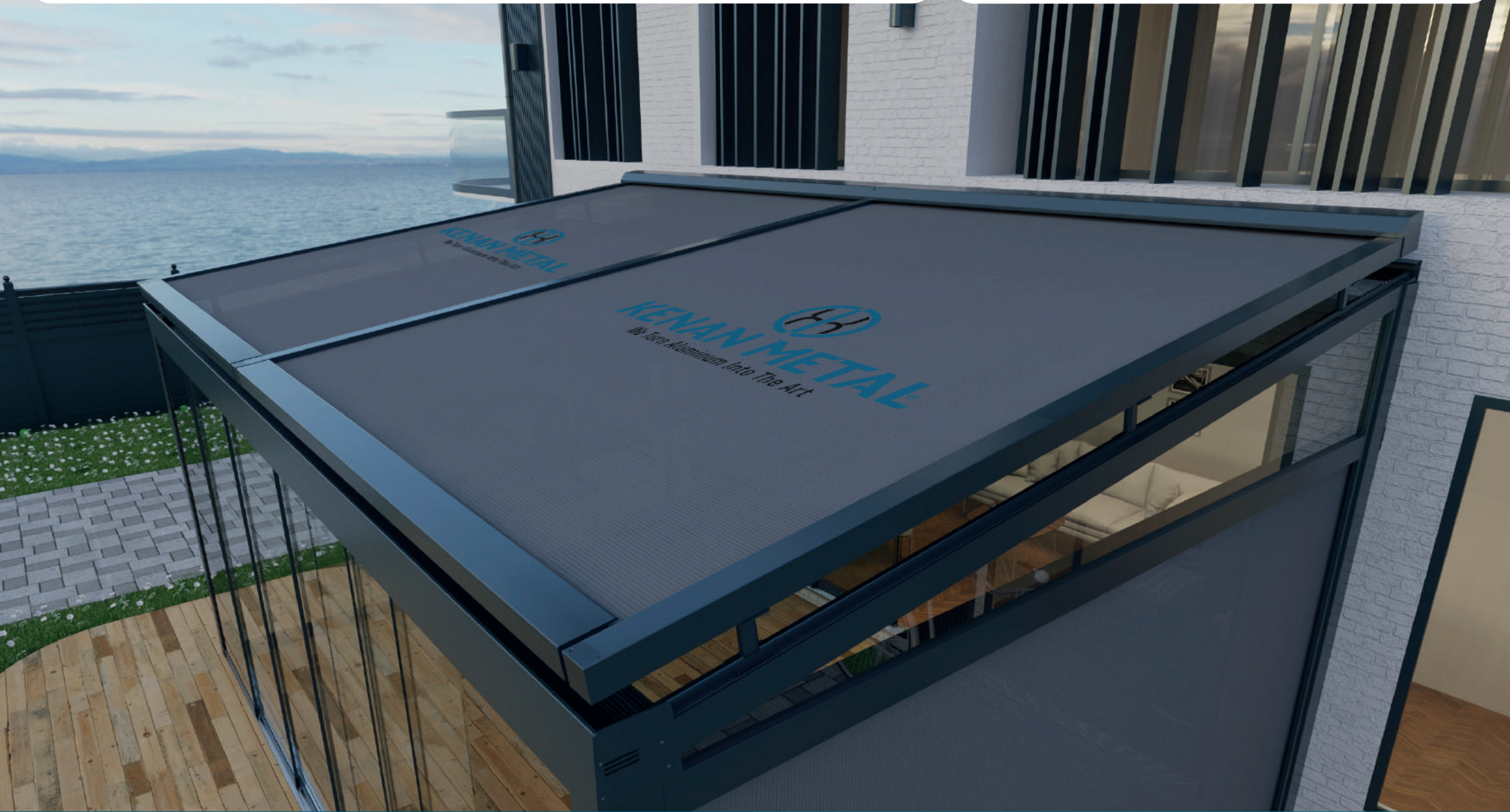
  
ARTINYUM

## SEVILLA TAVAN PERDESİ SİSTEMLERİ

SEVILLA CEILING  
CURTAIN SYSTEMS

# SEVİLLA TAVAN PERDESİ SİSTEMLERİ

SEVILLA CEILING CURTAIN SYSTEMS



SEVİLLA TAVAN PERDESİ SİSTEMLERİ, DIŞ MEKANLARDA GÜNEŞ IŞIĞINDAN, SICAKLIKTAN VE HAVA KOŞULLARINDAN KORUNMAK AMACIYLA KULLANILAN MODERN BİR PERDE KAPLAMA ÇÖZÜMÜDÜR.

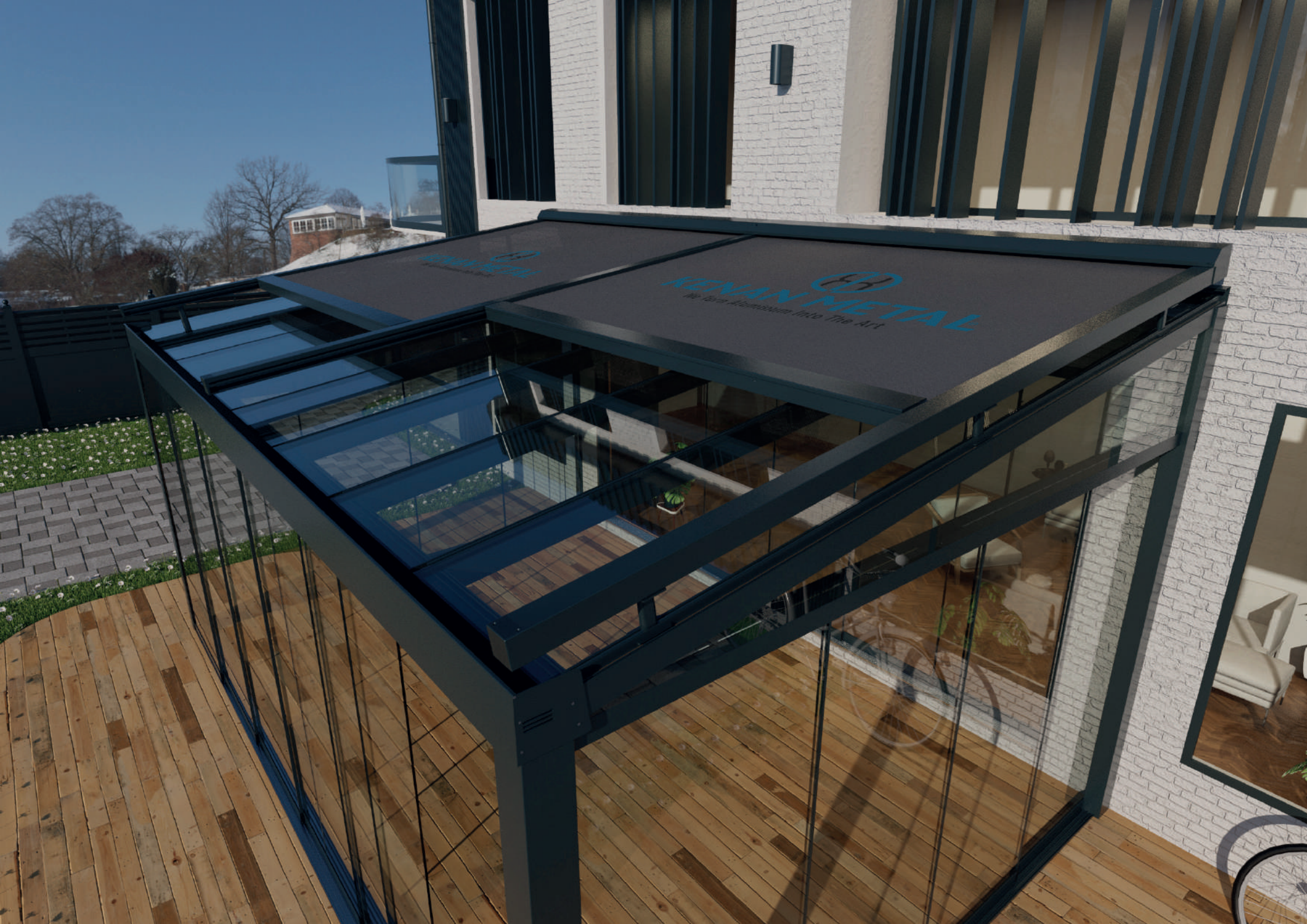
ALÜMİNYUMDAN YAPILMIŞ BİR KASA, PERDEYİ SAĞLAMAK VE KORUMAK İÇİN KULLANILIR. BU KASA GENELLİKLE ESTETİK VE DAYANIKLILIK AÇISINDAN ÖNEMLİDİR.

ALÜMİNYUM YAN KANALLAR, PERDENİN YANLARDA DÜZGÜN BİR ŞEKİLDE HAREKET ETMESİNİ SAĞLAR VE RÜZGARIN ALTINA SIZMASINI ÖNLER.

SEVILLA CEILING CURTAIN SYSTEMS ARE A MODERN WINDOW COVERING SOLUTION USED TO PROTECT OUTDOOR SPACES FROM SUNLIGHT, HEAT, AND WEATHER CONDITIONS.

A CASING MADE OF ALUMINUM IS USED TO STORE AND PROTECT THE BLIND. THIS CASING IS GENERALLY IMPORTANT FOR AESTHETICS AND DURABILITY.

ALUMINUM SIDE CHANNELS ENSURE THE SMOOTH MOVEMENT OF THE BLIND ON THE SIDES AND PREVENT WIND FROM SEEPING UNDERNEATH.



KENAN METAL

**KENAN METAL**  
We turn Remnants into The Art



RAL RENK STANDARDINA GÖRE SEÇTİĞİNİZ TÜM RENKLER UYGULANABİLİR.

COLOURING OF YOUR CHOICE, ACCORDING TO THE RAL COLOUR STANDARD.



YAĞMUR VE RÜZGAR ÇİBİ HAVA ŞARTLARINA SON DERECE DAYANIKLIDIR.

IT IS EXTREMELY RESISTANT TO WEATHER CONDITIONS SUCH AS RAIN AND WIND.



MATERYAL // 6063 T5 ALÜMİNYUM, PASLANMAZ ÇELİK VE DERLİN.

MATERIALS // 6063 T5 ALUMINIUM, STAINLESS STEEL AND DERLİN.

SEVİLLA TAVAN PERDESİ SİSTEMİNDE, KUMAŞLAR ÖZEL OLARAK TASARLANMIŞ BİR ZİP KANALI BOYUNCA HAREKET EDER. BU ZİP KANALI, PERDENİN YANLARINDA BULUNUR VE KUMAŞIN SIKICA YERİNDE KALMASINI SAĞLAR.

SEVİLLA TAVAN PERDESİ SİSTEMİ, GÜNEŞ IŞINLARINI ENGELLEYEREK İÇ MEKANLARA DAHA SERİN VE GÖLGELİ BİR ORTAM SAĞLAR. BU, SICAK HAVALARDA KONFORU ARTIRIR VE MOBİLYALARIN GÜNEŞİN ZARARLI ETKİLERİNDEN KORUNMASINA YARDIMCI OLUR.

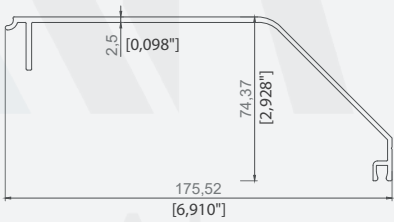
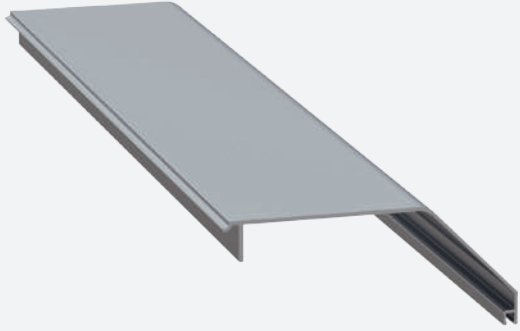
SEVİLLA TAVAN PERDESİ SİSTEMİ, MODERN VE ŞİK BİR GÖRÜNÜME SAHİPTİR. GENELLİKLE DİŞ MEKANLARDA KULLANILDIKLARINDA, YAPIYA ZARIF BİR DOKUNUŞ KATARAK MEKANIN ESTETİĞİNİ ARTIRIRLAR.

IN THE SEVİLLA CEILING CURTAIN SYSTEM, FABRICS MOVE ALONG A SPECIALLY DESIGNED ZIP CHANNEL. THIS ZIP CHANNEL IS LOCATED ON THE SIDES OF THE BLIND AND ENSURES THAT THE FABRIC STAYS IN PLACE SECURELY.

THE SEVİLLA CEILING CURTAIN SYSTEM BLOCKS SUNLIGHT, PROVIDING A COOLER AND SHADED ENVIRONMENT INDOORS. THIS INCREASES COMFORT DURING HOT WEATHER AND HELPS PROTECT FURNITURE FROM THE HARMFUL EFFECTS OF THE SUN.

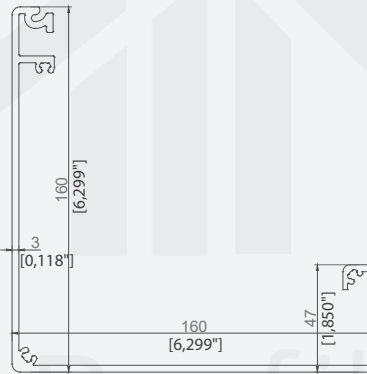
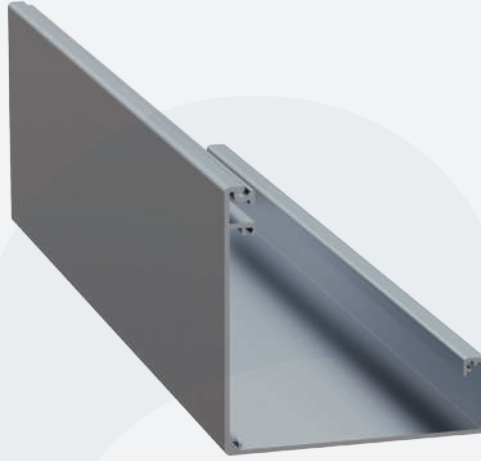
THE SEVİLLA CEILING CURTAIN SYSTEM HAS A MODERN AND STYLISH APPEARANCE. WHEN USED OUTDOORS, THEY ADD AN ELEGANT TOUCH TO THE STRUCTURE, ENHANCING THE AESTHETICS OF THE SPACE.





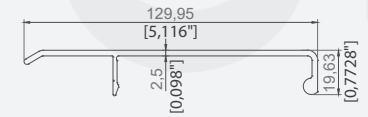
MOTOR KUTUSU KAPAĞI  
MOTOR BOX COVER

ÜRÜN KODU / PRODUCT CODE	3182
AĞIRLIK / WEIGHT	1,550 KG/M 3,417 LB/M



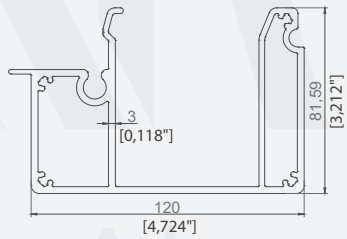
MOTOR KUTUSU  
MOTOR BOX

ÜRÜN KODU / PRODUCT CODE	3181
AĞIRLIK / WEIGHT	3,580 KG/M 7,893 LB/M



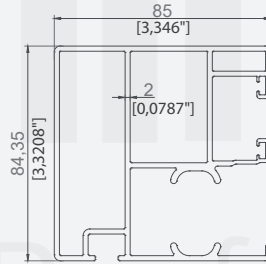
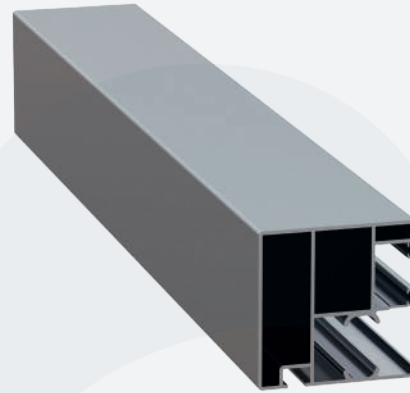
KUMAŞ PROFİL KAPAĞI  
FABRIC PROFILE COVER

ÜRÜN KODU / PRODUCT CODE	3179
AĞIRLIK / WEIGHT	1,135 KG/M 2,502 LB/M



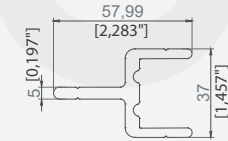
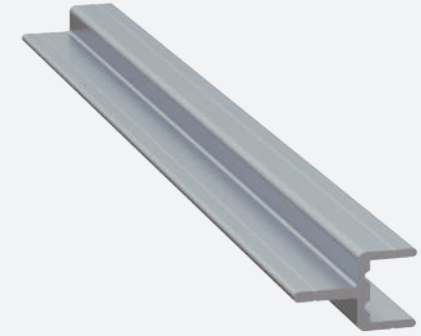
**KUMAŞ ÖN PROFİLİ**  
FABRIC FRONT PROFILE

ÜRÜN KODU / PRODUCT CODE	3180
AĞIRLIK / WEIGHT	3,905 KG/M 8,609 LB/M










**RAY PROFİLİ**  
RAIL PROFILE

ÜRÜN KODU / PRODUCT CODE	3178
AĞIRLIK / WEIGHT	2,981 KG/M 6,572 LB/M









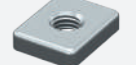
**MAKARA BAĞLANTI PROFİLİ**  
PULLEY CONNECTION PROFILE

ÜRÜN KODU / PRODUCT CODE	3567
AĞIRLIK / WEIGHT	1,390 KG/M 3,0644 LB/M

													
MOTOR KAPAK TAKIMI MOTOR COVER TEAM	RAY KAPAK TAKIMI RAIL COVER TEAM	ÇEKİCİ PROFİL KAPAK TAKIMI ATTRACTIVE PROFILE COVER TEAM	MOTOR BAĞLANTI SACI PARÇASI MOTOR CONNECTOR SHEET	MOTOR BAĞLANTI SACI MOTOR CONNECTION SHEET	MAKARA BAĞLANTI SACI PULLEY CONNECTION SHEET	ÇEKİCİ PROFİL PLASTİĞİ ATTRACTIVE PROFILE PLASTIC							
KOD / CODE ADET / PIECE	TP-3 2	KOD / CODE ADET / PIECE	TP-4 2	KOD / CODE ADET / PIECE	TP-5 2	KOD / CODE ADET / PIECE	TP-6 2	KOD / CODE ADET / PIECE	TP-7 2	KOD / CODE ADET / PIECE	TP-8 4	KOD / CODE ADET / PIECE	TP-9 2

													
YAY SPRING	KARABİNA KANCA CARBINE HOOK	BORU BAŞI VE MOTOR SWITCH PLASTİĞİ PIPE HEAD AND MOTOR SWITCH PLASTIC	RULMAN YATAK PLASTİĞİ BEARING HOUSING PLASTIC	M6X10 HAVŞA BAŞLI İMBUS CIVATA M6X10 COUNTERSUNK HEAD IMBUS BOLT	6301 RULMAN 6301 BEARING	GOLD SERİ RULMANLI TEKER GOLD SERIE BEARING WHEEL							
KOD / CODE ADET / PIECE	TP-12 1	KOD / CODE ADET / PIECE	TP-13 2	KOD / CODE ADET / PIECE	TP-14 2	KOD / CODE ADET / PIECE	TP-15 1	KOD / CODE ADET / PIECE	TP-16 4	KOD / CODE ADET / PIECE	TP-17 1	KOD / CODE ADET / PIECE	TP-18 4

													
M4 FİBERLİ SOMUN M4 FIBER NUT	M5 FİBERLİ SOMUN M5 FIBER NUT	GOLD TEKER RULMAN PİM FRONT TRACTOR BEARING FIXING LASER	MAKARA PİMİ REEL PIN	RAY KAPAĞI MAKARA PİMİ RAIL COVER REEL PIN	MOTOR KAPAĞI MAKARA PİMİ MOTOR COVER REEL PIN	PLASTİK MAKARA PLASTIC REEL							
KOD / CODE ADET / PIECE	TP-19 12	KOD / CODE ADET / PIECE	TP-20 4	KOD / CODE ADET / PIECE	TP-21 2	KOD / CODE ADET / PIECE	TP-22 4	KOD / CODE ADET / PIECE	TP-23 2	KOD / CODE ADET / PIECE	TP-24 2	KOD / CODE ADET / PIECE	TP-25 8

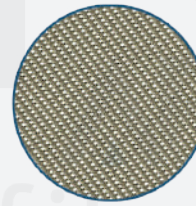
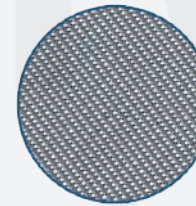
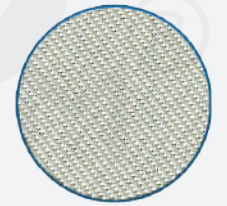
													
M8X16 HAVŞA BAŞLI İMBUS CIVATA M8X16 COUNTERSUNK HEAD IMBUS BOLT	M4X25 HAVŞA BAŞ İMBUS CIVATA M4X25 COUNTERSUNK HEAD IMBUS BOLT	3.9X16 AKILLI VIDA 3.9X16 SMART SCREW	4.8X22 AKILLI VIDA 4.8X22 SMART SCREW	M5X22 ANAHTAR BAŞ CIVATA M5X22 SOCKET HEAD BOLT	608ZZ RULMAN MİLİ 608ZZ BALL BEARING SHAFT	M8 KARE KAYNAK SOMUN M8 SQUARE WELD NUT							
KOD / CODE ADET / PIECE	TP-26 2	KOD / CODE ADET / PIECE	TP-27 2	KOD / CODE ADET / PIECE	TP-28 16	KOD / CODE ADET / PIECE	TP-29 14	KOD / CODE ADET / PIECE	TP-30 6	KOD / CODE ADET / PIECE	TP-31 4	KOD / CODE ADET / PIECE	TP-32 8

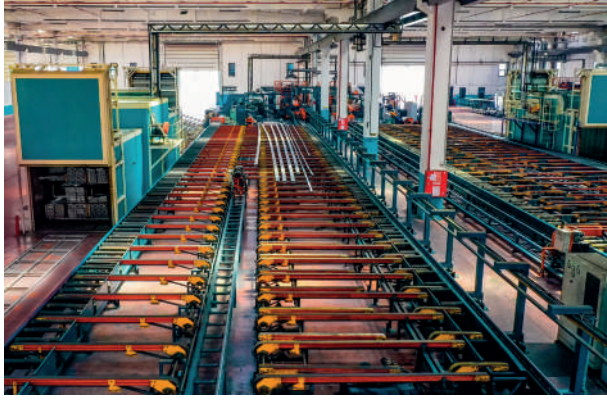


SEVİLLA TAVAN  
PERDESİ AKSESUAR  
TAKIMI  
KOD : TP-1

SEVİLLA CEILING  
CURTAIN  
ACCESSORIES SET  
CODE : TP-1



SEVİLLA TAVAN PERDESİ  
AKSESUARLARISEVİLLA CEILING CURTAIN  
ACCESSORIESZİP PERDE FERMUAR  
ZIP CURTAIN ZIPPERKOD / CODE  
ADET / PIECEZIP-02  
26MM PVC ÇUBUK  
6MM PVC RODKOD / CODE  
ADET / PIECEZIP-03  
6 METERSDİKME KUEZKSİZ FİTİL  
SEWING QUENCHED ROVINGKOD / CODE  
ADET / PIECEZIP-04  
6 METERSDİKME BALONLU CONTA  
PILLAR BALLOON GASKETKOD / CODE  
ADET / PIECEZIP-05  
100 METERS40MM KİL FIRÇA  
40MM BRISTLE BRUSHKOD / CODE  
ADET / PIECETP-31  
100 METERSRAY BAĞLANTI APARATI  
RAIL CONNECTION APPARATUSKOD / CODE  
ADET / PIECETP-32  
4ÇİFT YAYLI SİSTEM ORTA BAĞLANTISI  
DOUBLE SPRING MIDDLE CONNECTIONKOD / CODE  
ADET / PIECETP-33  
478LİK GALVANİZ BORU  
78 GALVANIZED PIPEKOD / CODE  
ADET / PIECETP-10  
6 METERSERS MOTOR 40 NM  
ERS ENGINE 40 NMKOD / CODE  
ADET / PIECERTS-40  
1ERS 5 KANALLI KUMANDA  
ERS FIVE-CHANNEL REMOTE CONTROLKOD / CODE  
ADET / PIECEERS-805  
1ERS TEK KANALLI KUMANDA  
ERS SINGLE-CHANNEL REMOTE CONTROLKOD / CODE  
ADET / PIECEERS-801  
1TAVAN PERDESİ İP  
CEILING CURTAIN YARNKOD / CODE  
ADET / PIECETP-11  
200 METERSZİP SCREEN KUMAŞ KREM  
ZIP SCREEN FABRIC CREAMKOD / CODE  
ADET / PIECEZIP-K01  
1 ROLLZİP SCREEN KUMAŞ GRİ  
ZIP SCREEN FABRIC GRAYKOD / CODE  
ADET / PIECEZIP-K02  
1 ROLLZİP SCREEN KUMAŞ BEYAZ  
ZIP SCREEN FABRIC WHITEKOD / CODE  
ADET / PIECEZIP-K03  
1 ROLL



## Biz kimiz ?

ÜSTÜN KALİTELİ ALÜMİNYUM PROFİL ÜRETİMİNİ HER GEÇEN GÜN ARTAN STANDARTLARLA DEVAM ETTİREN KENAN METAL A.Ş. ÜLKEMİZİN ÖNDE GELEN ALÜMİNYUM FABRİKALARINDAN BİRİDİR. MUTLAK MÜŞTERİ VE ÇALIŞAN MEMNUNİYETİ PRENSİBİYLE ÜRETİM YAPAN KENAN METAL A.Ş., TENTE PERGOLA, İNŞAAT VE ÖZEL PROFİLLER GİBİ FARKLI SEKTÖRLERİN MEVCUT VE GELECEKTEKİ BEKLENTİLERİNİ KARŞILAYAN, ÇEVREYLE DOST ÜRETİM SİSTEMLERİNİ BENİMSEYEN, KÜRESEL ETKİLEŞİMLERİ YAKINDAN TAKİP EDEREK SÜREKLİ YENİLENEN, ÇAĞDAŞ BİR VİZYONLA GELİŞİYOR. ÜRÜN-KALİTE ÇİTASININ SÜREKLİ YÜKSEKİLMESİ, ÜRÜN YELPAZESİNİN GELİŞTİRİLMESİ, YENİ ÜRÜNLERİN TASARIMI, KULLANIM ALANLARININ ARTTIRILMASI İÇİN SÜREKLİ OLARAK ÇALIŞAN AR-GE BÖLÜMÜYLE GÖZ DOLDURAN KENAN METAL A.Ş., KALİTESİ GÜVENİLİRLİĞİ, KULLANDIĞI TEKNOLOJİ VE ÖZEL ÇÖZÜMLER ÜRETME GÜCÜYLE PAZAR PAYINI SÜREKLİ GENİŞLETİYOR.

KENAN METAL A.Ş., ALÜMİNYUM BAZLI ÜRÜNLERİN KALİTELERİNİ ARTTIRARAK VE KULLANIM ALANLARINI YAYGINLAŞTIRARAK DOĞAL VE ESTETİK MEKANLARIN YARATILMASINA DA ÖNCÜLÜK EDİYOR. HER YAPI İÇİN KENDİNE ÖZGÜ ÜSTÜN NİTELİKLİ VE İLERİ TEKNOLOJİ GEREKTİREN ÇAĞDAŞ ÇÖZÜMLER SUNAN KENAN METAL A.Ş., ESNEK YAKLAŞIMLARI ÜSTÜN HİZMET KALİTESİ VE FİYAT-KALİTE DENGESİYLE KÜRESEL PAZARDA SÖZ SAHİBİ BİR KURUM OLMA YOLUNDA EMİN ADIMLARLA İLERLİYOR.

## WHO ARE WE?

KENAN METAL IS ONE OF THE LEADING ALUMINUM FACTORIES OF OUR COUNTRY WHICH CONTINUES TO PRODUCE HIGH QUALITY ALUMINUM PROFILES WITH INCREASING STANDARDS EACH PASSING DAY. KENAN METAL WHICH MAKES PRODUCTION WITH ABSOLUTE CUSTOMER AND EMPLOYEE SATISFACTION PRINCIPLE, DEVELOPS WITH A MEDERN VISION THAT MEETS CURRENT AND FUTURE EXPECTATIONS OF DIFFERENT SECTORS SUCH AS AWNING PERGOLA, CONSTRUCTION AND SPECIAL PROFILES, ADOPTS ENVIRONMENTALLY FRIENDLY PRODUCTION SYSTEMS, RENEWS ITSELF CONSTANTLY BY FOLLOWING GLOBAL INTERACTIONS CLOSELY.

KENAN METAL WHICH MAKES A STRONG IMPRESSION WITH ITS R&D DEPARTMENT WORKING CON STANTLY FOR RAISING PRODUCT-QUALITY LEVEL, IMPROVING PRODUCT RANGE, DESIGNING NEW PRODUCTS, INCREASING USAGE AREAS, EXPANDS ITS MARKET SHARE CONSTANTLY WITH ITS QUALITY, CREDIBILITY TECHNOLOGY USED AND POWER TO PRODUCE SPECIAL SOLUTIONS KENAN METAL IS ALSO LEADING CREATION OF NATURAL AND AESTHETIC SPACES BY INCREASING QUALITY OF ALUMINUM-BASED PRODUCTS AND EXPANDING USAGE AREAS. KENAN METAL WHICH OFFERS ITS UNIQUE, SUPERIOR AND MODERN SOLUTIONS REQUIRING ADVANCED TECHNOLOGY FOR EVERY STRUCTURE, IS MOVING CONFIDENTLY ON ITS WAY TO BECAME A PROMISING COMPANY IN GLOBAL MARKET WITH ITS FLEXIBLE APPROACHES, SUPERIOR SERVICE QUALITY AND PRICE-QUALITY BALANCE.



**KENAN METAL®**





KENANMETAL.COM | INFO@KENANMETAL.COM | +90 212 485 60 35

GENEL MERKEZ : İOSB MH. ATATÜRK BLV. MAHMUT TORUN İŞ MERKEZİ NO: 54 KAT:1 34490 İKİTELLİ OSB / BAŞAKŞEHİR / İSTANBUL  
FABRİKA : VELİMEŞE MAHALLESİ, KANDİL CADDESİ, 329 SOKAK, DIŞ KAPI NO:7 ERGENE / TEKİRDAĞ

