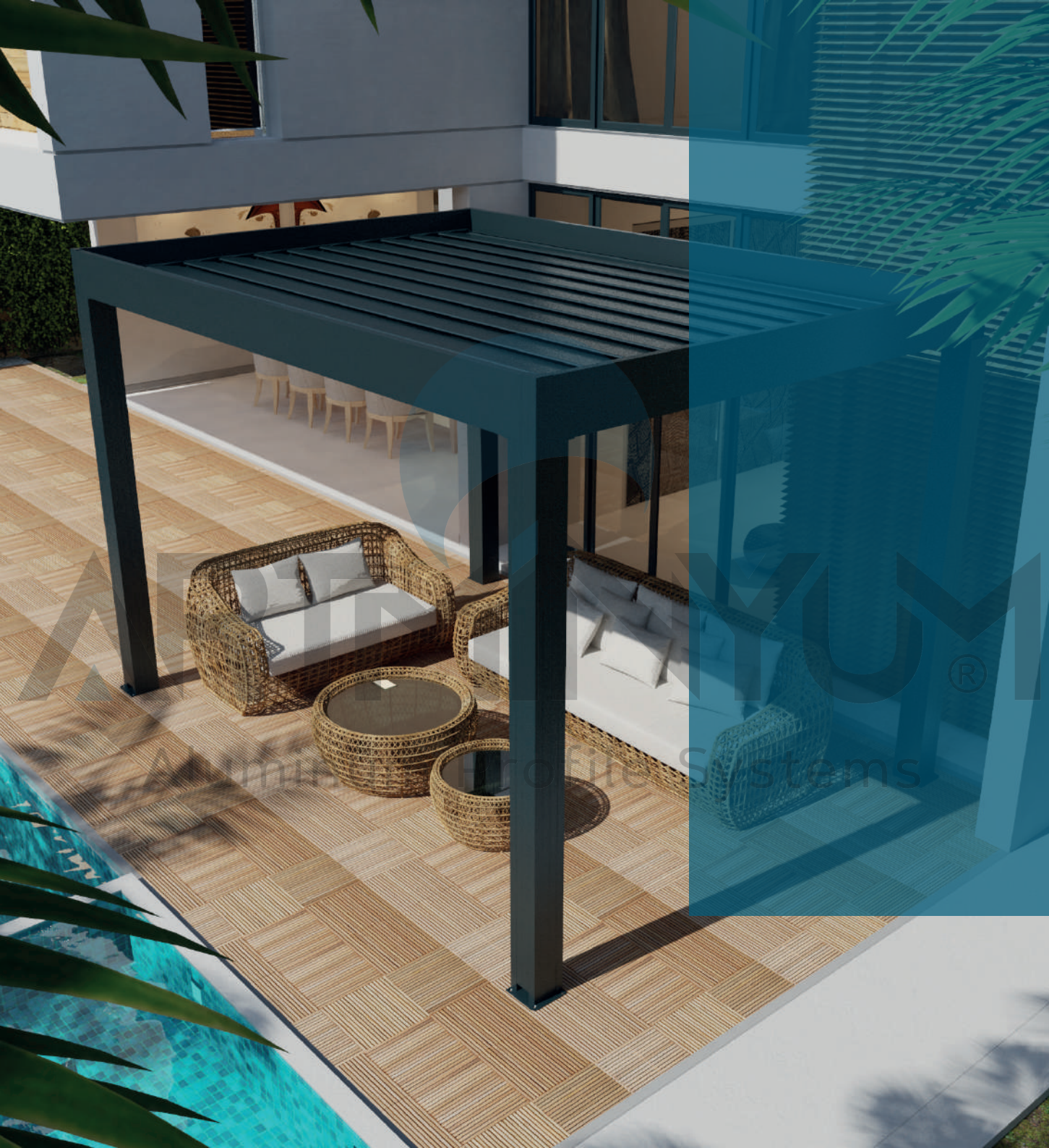


  
KENAN METAL

  
ARTMINYUM



## BİO - PERGOLA SİSTEMLERİ

BIO - PERGOLA  
SYSTEMS

# BİO-PERGOLA SİSTEMLERİ

BIO-PERGOLA SYSTEMS

ARTMINYUM®

ARTMINYUM  
www.artminyum.com

BİO-PERGOLA SİSTEMLERİNDE KULLANILAN MOTORLU LAMELLER, AÇILIR-KAPANIR ŞEKİLDE TASARLANMIŞTIR. BU LAMELLER, GÜNEŞ IŞIĞINI VE HAVALANDIRMAYI KONTROL ETMEK İÇİN AÇILIP KAPANABİLİR. AYNI ZAMANDA YAĞMUR, RÜZGAR VE DİĞER DIŞ ETKENLERE KARŞI KORUMA SAĞLAR.

BİO-PERGOLA , UZAKTAN KUMANDA VEYA OTOMASYON SİSTEMLERİ İLE KONTROL EDİLEBİLİR. BU, KULLANICILARIN HAVA KOŞULLARINA ANINDA TEPKİ VEREBİLMELERİNİ SAĞLAR.

BİO-PERGOLA SİSTEMLERİ, GÜNEŞ IŞIĞINI KONTROL EDEREK İÇ MEKAN SICAKLIĞINI DÜZENLER. AYRICA, AÇIK VEYA KAPALI KONUMDAYKEN DE GÜNEŞİN ETKİLERİNİ AZALTARAK RAHAT BİR ORTAM SAĞLAR.

THE MOTORIZED LOUVERS USED IN BIO-PERGOLA SYSTEMS ARE DESIGNED TO OPEN AND CLOSE. THESE LOUVERS CAN BE ADJUSTED TO CONTROL SUNLIGHT AND VENTILATION. THEY ALSO PROVIDE PROTECTION AGAINST RAIN, WIND, AND OTHER EXTERNAL FACTORS.

BIO-PERGOLA CAN BE CONTROLLED REMOTELY OR THROUGH AUTOMATION SYSTEMS, ALLOWING USERS TO RESPOND INSTANTLY TO WEATHER CONDITIONS.

BIO-PERGOLA SYSTEMS REGULATE INDOOR TEMPERATURE BY CONTROLLING SUNLIGHT. ADDITIONALLY, THEY PROVIDE A COMFORTABLE ENVIRONMENT BY REDUCING THE EFFECTS OF THE SUN WHETHER THEY ARE OPEN OR CLOSED.

ARTMINYUM®  
Aluminum Profile Systems



*Outdoor Of Art*  
Diş Mekanda Sanat



RAL RENK STANDARDAINA GÖRE SEÇTİĞİNİZ TÜM RENKLER UYGULANABİLİR.

COLOURING OF YOUR CHOICE, ACCORDING TO THE RAL COLOUR STANDARD.



YAĞMUR VE RÜZGAR GİBİ HAVA ŞARTLARINA SON DERECE DAYANIKLIDIR.

IT IS EXTREMELY RESISTANT TO WEATHER CONDITIONS SUCH AS RAIN AND WIND.



MATERYAL // 6063 T5 ALÜMİNYUM, PASLANMAZ ÇELİK VE DERLİN.

MATERIALS // 6063 T5 ALUMINUM, STAINLESS STEEL AND DERLİN.

BIO-PER SİSTEMLERİ, MODERN VE ESTETİK TASARIMLARIYLA DİKKAT ÇEKER. BU, KULLANICILARIN AÇIK HAVA ALANLARINI HEM FONKSİYONEL HEM DE GÖRSEL OLARAK ÇEKİCİ HALE GETİRMELERİNE OLANAK TANIR.

MOTORLU LAMELLERİN KONTROLÜ, ENERJİ VERİMLİLİĞİNİ ARTIRABİLİR. ÖRNEÇİN, GÜNEŞLİ GÜNLERDE LAMELLERİ KAPATILARAK İÇ MEKAN SICAKLIĞINI DÜŞÜREBİLİR VE KLİMA KULLANIMINI AZALTABİLİRSİNİZ.

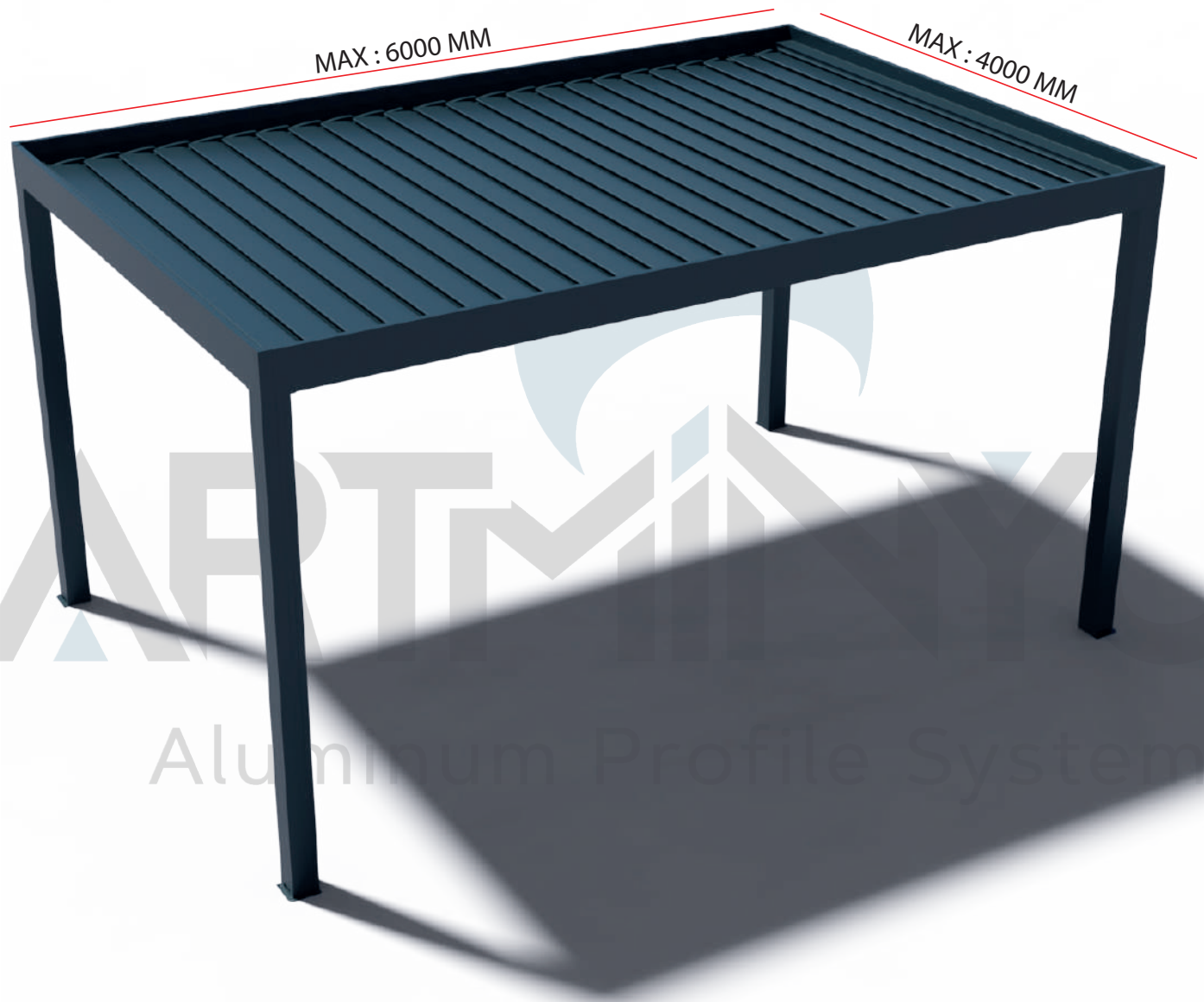
BIO-PER SİSTEMLERİ, DIŞ MEKAN ALANLARINI DAHA KULLANIŞLI VE KONFORLU HALE GETİRMEK İÇİN TASARLANMIŞTIR. İKLİM KOŞULLARINA UYUM SAĞLAMA, ENERJİ TASARRUFU VE ESTETİK TASARIM GİBİ AVANTAJLARIYLA POPÜLERDİRLER.

BIO-PER SYSTEMS DRAW ATTENTION WITH THEIR MODERN AND AESTHETIC DESIGNS. THIS ALLOWS USERS TO MAKE OUTDOOR SPACES BOTH FUNCTIONAL AND VISUALLY APPEALING.

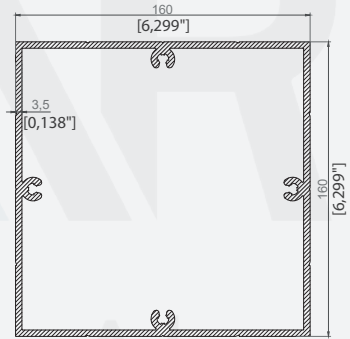
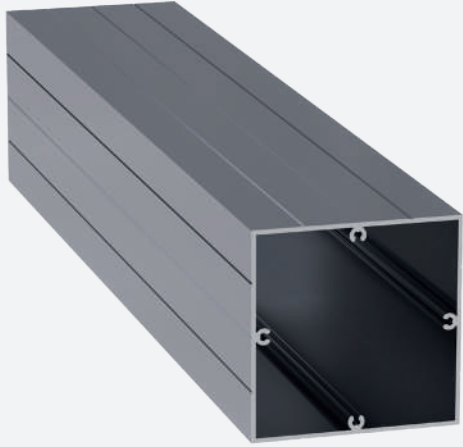
CONTROL OF THE MOTORIZED LOUVERS CAN INCREASE ENERGY EFFICIENCY. FOR EXAMPLE, BY CLOSING THE LOUVERS ON SUNNY DAYS, YOU CAN LOWER INDOOR TEMPERATURES AND REDUCE THE USE OF AIR CONDITIONING.

BIO-PER SYSTEMS ARE DESIGNED TO MAKE OUTDOOR AREAS MORE FUNCTIONAL AND COMFORTABLE. THEY ARE POPULAR FOR THEIR ADVANTAGES SUCH AS ADAPTING TO CLIMATE CONDITIONS, ENERGY SAVINGS, AND AESTHETIC



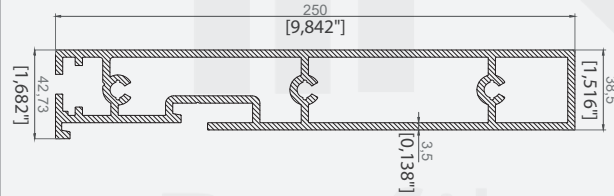


ARTMIND®  
Aluminum Profile Systems



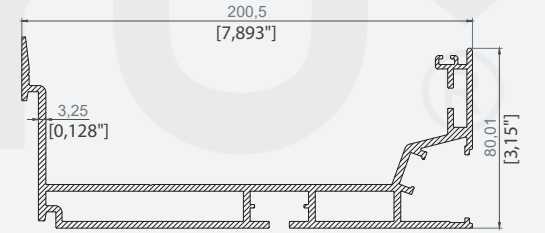
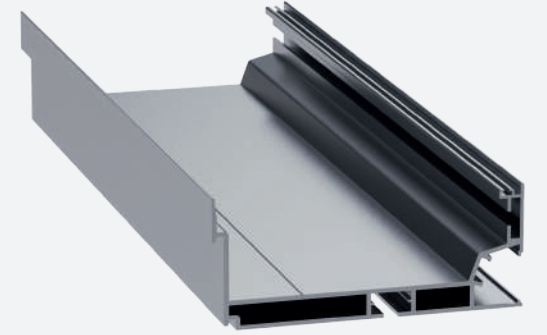
ÇİZGİLİ DİKME PROFİLİ  
STRIPED PILLAR PROFILE

ÜRÜN KODU / PRODUCT CODE	2087
AĞIRLIK / WEIGHT	6,818 KG/M 15,031 LB/M



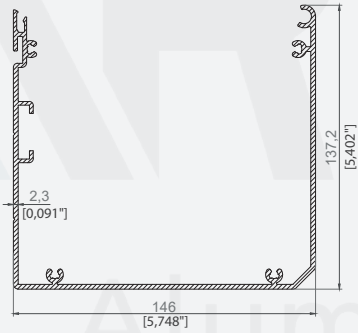
YAN KAYIT PROFİLİ  
SIDE BEAM PROFILE

ÜRÜN KODU / PRODUCT CODE	2088
AĞIRLIK / WEIGHT	7,130 KG/M 15,719 LB/M



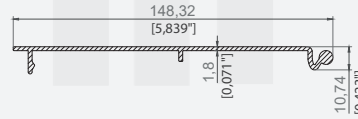
DERE PROFİLİ  
GUTTER PROFILE

ÜRÜN KODU / PRODUCT CODE	2089
AĞIRLIK / WEIGHT	4,950 KG/M 10,913 LB/M



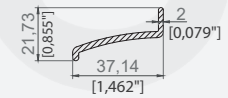
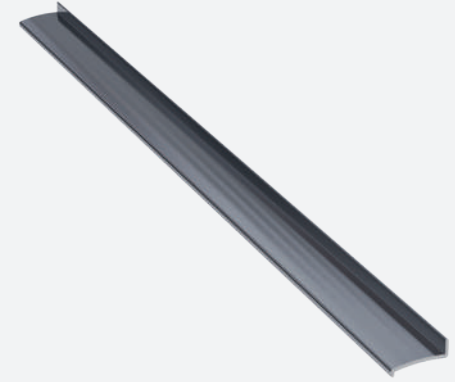
MOTOR KUTUSU  
MOTOR BOX

ÜRÜN KODU / PRODUCT CODE	2090
AĞIRLIK / WEIGHT	3,073 KG/M 6,775 LB/M



MOTOR KUTUSU KAPAÇI  
MOTOR BOX COVER

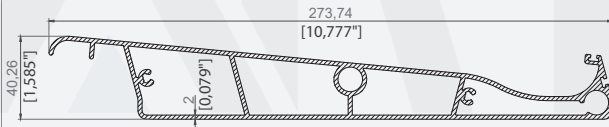
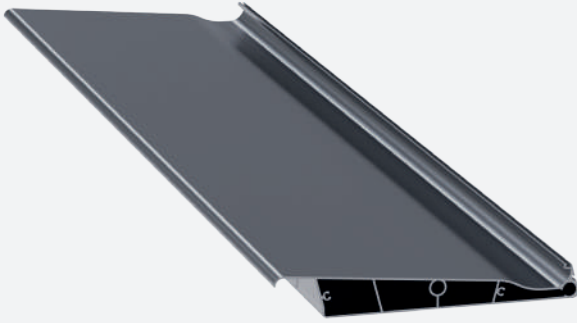
ÜRÜN KODU / PRODUCT CODE	2091
AĞIRLIK / WEIGHT	0,913 KG/M 2,013 LB/M



MOTOR KUTUSU ÖN PROFİL  
MOTOR BOX FRONT PROFILE

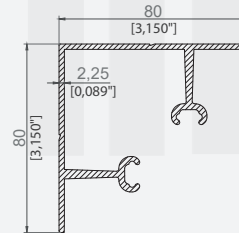
ÜRÜN KODU / PRODUCT CODE	2092
AĞIRLIK / WEIGHT	0,323 KG/M 0,712 LB/M





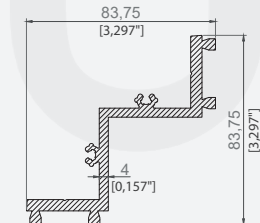
PANEL PROFİLİ  
PANEL PROFILE

ÜRÜN KODU / PRODUCT CODE	2096
AĞIRLIK / WEIGHT	3,962 KG/M 8,735 LB/M



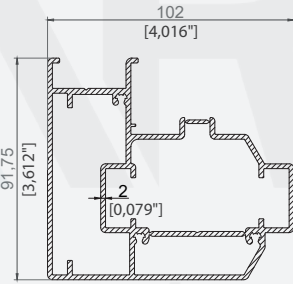
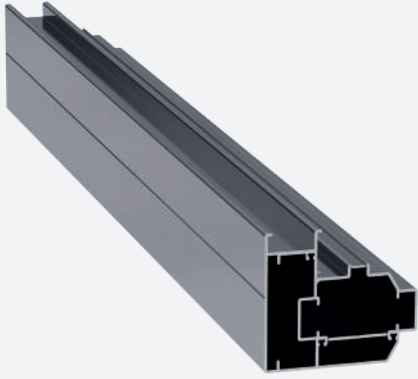
KÖŞE BİRLEŞİM KAPAÇI  
CORNER CONNECTION COVER

ÜRÜN KODU / PRODUCT CODE	2118
AĞIRLIK / WEIGHT	1,691 KG/M 3,728 LB/M



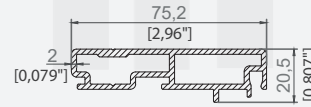
KÖŞE BİRLEŞTİRİCİ  
CORNER CONNECTION

ÜRÜN KODU / PRODUCT CODE	2119
AĞIRLIK / WEIGHT	2,277 KG/M 5,02 LB/M



RAY PROFİLİ  
RAIL PROFILE

ÜRÜN KODU / PRODUCT CODE	2279
AĞIRLIK / WEIGHT	3,057 KG/M 6,74 LB/M







RAY KAPAK PROFİLİ  
RAIL COVER PROFILE

ÜRÜN KODU / PRODUCT CODE	2280
AĞIRLIK / WEIGHT	1,149 KG/M 2,533 LB/M



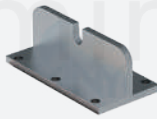



### BIOPER SİSTEMİ AKSESUAR TAKIMI

BIOPER SYSTEM ACCESSORY  
SET

				
MOTOR YAN KAPAĞI SAĞ MOTOR SIDE COVER RIGHT	MOTOR YAN KAPAĞI SOL MOTOR SIDE COVER LEFT	PANEL YAN KAPAK SAĞ PANEL SIDE COVER RIGHT	PANEL YAN KAPAK SOL PANEL SIDE COVER LEFT	PANEL MAKAS KASNAĞI SAĞ RIGHT PANEL HINGE
KOD / CODE ADET / PIECE	BP20-001 -	KOD / CODE ADET / PIECE	BP20-002 -	KOD / CODE ADET / PIECE
		KOD / CODE ADET / PIECE	BP20-003 -	KOD / CODE ADET / PIECE
			KOD / CODE ADET / PIECE	BP20-004 -
				KOD / CODE ADET / PIECE
				BP20-005 -

				
PANEL MAKAS KASNAĞI SOL LEFT PANEL HINGE	İÇ KÖŞE BİRLEŞTİRİCİ INSIDE CORNER CONNECTOR	DIŞ KÖŞE BİRLEŞTİRİCİ OUTSIDE CORNER CONNECTOR	SEKİZGEN DIŞLI OCTAGONAL GEAR	LED LED
KOD / CODE ADET / PIECE	BP20-006 -	KOD / CODE ADET / PIECE	BP20-007 -	KOD / CODE ADET / PIECE
		KOD / CODE ADET / PIECE	BP20-008 -	KOD / CODE ADET / PIECE
			KOD / CODE ADET / PIECE	PAL-91 -
				KOD / CODE ADET / PIECE
				BP20-010 -

				
TRİGER KAYIŞ TIMING BELT	RULMAN ROLLER	RULMAN YATAĞI BEARING HOUSING	YETMİŞLİK BORU BAŞI SEVENTY PIPE HEAD	DIŞ TRAFÖ OUTDOOR TRANSFORMER
KOD / CODE ADET / PIECE	BP20-011 -	KOD / CODE ADET / PIECE	BP20-012 -	KOD / CODE ADET / PIECE
		KOD / CODE ADET / PIECE	BP20-013 -	KOD / CODE ADET / PIECE
			KOD / CODE ADET / PIECE	BP20-014 -
				KOD / CODE ADET / PIECE
				BP20-015 -

				
KAYIŞ ÇEKME APARATI BELT PULLING APPARATUS	PANEL SABİTLEME SAĞ PANEL FIXING RIGHT	KAYIŞ İTME APARATI BELT PUSHER	KAYIŞ GERME PASLANMAZ SAĞ BELT TENSIONING STAINLESS RIGHT	PANEL TEKERLEKLİ SAPLAMA (10MM X 115MM) PANEL WHEEL STUD (10MM X 115MM)
KOD / CODE ADET / PIECE	BP20-016 -	KOD / CODE ADET / PIECE	BP20-017 -	KOD / CODE ADET / PIECE
		KOD / CODE ADET / PIECE	BP20-018 -	KOD / CODE ADET / PIECE
			KOD / CODE ADET / PIECE	BP20-019 -
				KOD / CODE ADET / PIECE
				BP20-020 -



BIOPER SİSTEMİ AKSESUAR  
TAKIMI




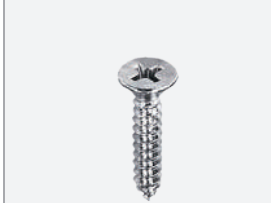

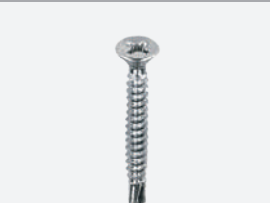


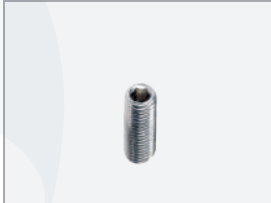
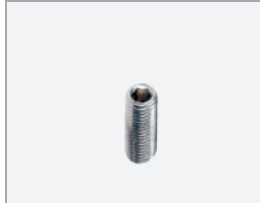




BIOPER SYSTEM ACCESSORY  
SET

PANEL TEKERLEKLİ SAPLAMA (2MMX55MM) PANEL WHEEL STUD (2MMX55MM)	PANEL ÜST ÖN SAPLAMA PANEL TOP FRONT STUD	PANEL ORTA SAPLAMA PANEL CENTER STUD	PANEL TEKER VE ORTA UZUN BURÇ PANEL WHEEL AND MEDIUM LONG BUSHING	PANEL KAPAK UZUN BURÇ PANEL COVER LONG BUSHING
KOD / CODE ADET / PIECE	KOD / CODE ADET / PIECE	KOD / CODE ADET / PIECE	KOD / CODE ADET / PIECE	KOD / CODE ADET / PIECE
BP20-021 -	BP20-022 -	BP20-023 -	BP20-024 -	BP20-025 -
PANEL KAPAK KISA BURÇ PANEL COVER SHORT BUSHING	PANEL KAPAK 12 LİK KISA BURÇ PANEL COVER 12 MM SHORT BUSHING	MAKAS KASNAK UZUN BURÇ SCISSORS PULLEY LONG BUSHING	LED KAPAK LED COVER	RAY KANAL PLASTİĞİ RAIL CHANNEL PLASTIC
KOD / CODE ADET / PIECE	KOD / CODE ADET / PIECE	KOD / CODE ADET / PIECE	KOD / CODE ADET / PIECE	KOD / CODE ADET / PIECE
BP20-026 -	BP20-027 -	BP20-028 -	BP20-029 -	BP20-030 -
DİKME KÖŞE ÜST KAPAK STRUT CORNER TOP COVER	KÖŞE AYAK ÜST BAĞLANTI CORNER FOOT TOP COLLECTION	KÖŞE AYAK ALT BAĞLANTI CORNER FOOT BOTTOM COLLECTION	KÖŞE AYAK ORTA ÜST BAĞLANTI CORNER FOOT MIDDLE TOP COLLECTION	ORTA AYAK ÜST BAĞLANTI MIDDLE FOOT TOP CONNECTION
KOD / CODE ADET / PIECE	KOD / CODE ADET / PIECE	KOD / CODE ADET / PIECE	KOD / CODE ADET / PIECE	KOD / CODE ADET / PIECE
BP20-031 -	BP20-032 -	BP20-033 -	BP20-034 -	BP20-035 -
KÖŞE VE ORTA AYAK ALT BAĞLANTI CORNER AND MIDDLE BOTTOM CONNECTION	RAY ÖN KAYIŞ AYAR KAPAK RAIL FRONT BELT ADJUSTMENT COVER	70'LİK BORU 70 MM PIPE	RAY KIL FIRÇASI RAIL BRISTLE BRUSH	PANEL EPDM CONTASI PANEL EPDM GASKET
KOD / CODE ADET / PIECE	KOD / CODE ADET / PIECE	KOD / CODE ADET / PIECE	KOD / CODE ADET / PIECE	KOD / CODE ADET / PIECE
BP20-036 -	BP20-037 -	PAL-137 -	BP20-039 -	BP20-040 -

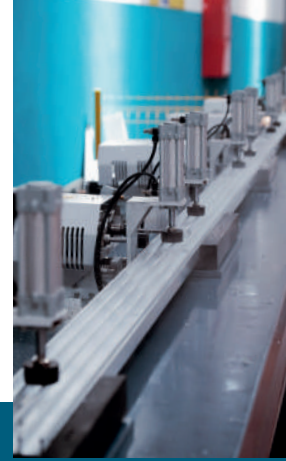
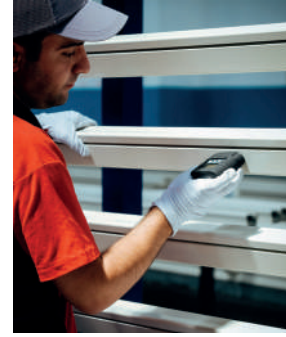
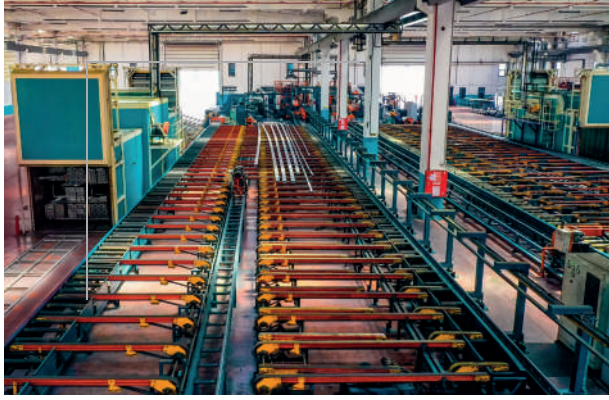


### BIOPER SİSTEMİ AKSESUAR TAKIMI

BIOPER SYSTEM ACCESSORY  
SET

 <p>OLUK EPDM CONTASI GROOVE EPDM GASKET</p> <p>KOD / CODE ADET / PIECE</p> <p>BP20-041 -</p>	 <p>M8x40 ÖZEL KÖŞE CIVATASI M8x40 SPECIAL CORNER BOLT</p> <p>KOD / CODE ADET / PIECE</p> <p>BP20-044 -</p>	 <p>M8x20 HAVŞA İMBUS PASLANMAZ M8x20 COUNTERSUNK İMBUS STAINLESS</p> <p>KOD / CODE ADET / PIECE</p> <p>BP20-045 -</p>	 <p>6,3X32 YHB DİREK VIDASI 6,3X32 YHB PILLAR SCREW</p> <p>KOD / CODE ADET / PIECE</p> <p>BP20-046 -</p>	 <p>4,8X25 YSB PANEL VIDASI 4,8X25 YSB PANEL SCREW</p> <p>KOD / CODE ADET / PIECE</p> <p>BP20-047 -</p>
 <p>4,8X45 YSB MUV RAY ON KAPAK 4,8X45 YSB MUV RAIL FRONT COVER</p> <p>KOD / CODE ADET / PIECE</p> <p>BP20-048 -</p>	 <p>M6 İNOX PULLU SOMUN M6 STAINLESS STEEL KNURLED NUT</p> <p>KOD / CODE ADET / PIECE</p> <p>BP20-049 -</p>	 <p>M8 LAMA SOMUN M8 FLAT NUT</p> <p>KOD / CODE ADET / PIECE</p> <p>BP20-050 -</p>	 <p>SETSKUR M6X10 PASLANMAZ M6X10 STAINLESS STEEL SET SCREW</p> <p>KOD / CODE ADET / PIECE</p> <p>BP20-051 -</p>	 <p>SETSKUR M6X6 PASLANMAZ M6X6 STAINLESS STEEL SET SCREW</p> <p>KOD / CODE ADET / PIECE</p> <p>BP20-052 -</p>
 <p>120 NM SOMFY MOTOR 120 NM SOMFY MOTOR</p> <p>KOD / CODE ADET / PIECE</p> <p>10-120/RTS-120 -</p>	 <p>SOMFY KUMANDA SOMFY CONTROL</p> <p>KOD / CODE ADET / PIECE</p> <p>10-KM1/RTS-KM1 -</p>	 <p>SOMFY ZAMAK APARATI SOMFY ZAMAK APPARATUS</p> <p>KOD / CODE ADET / PIECE</p> <p>PAL-140 -</p>	 <p>SOMFY SEKİZGEN MOTOR APARATI SOMFY OCTAGONAL MOTOR APPARATUS</p> <p>KOD / CODE ADET / PIECE</p> <p>PRG-27 -</p>	

# Aluminum Profile Systems



## Biz kimiz ?

ÜSTÜN KALİTELİ ALÜMİNYUM PROFİL ÜRETİMİNİ HER GEÇEN GÜN ARTAN STANDARTLARLA DEVAM ETTİREN KENAN METAL A.Ş. ÜLKEMİZİN ÖNDE GELEN ALÜMİNYUM FABRİKALARINDAN BİRİDİR. MUTLAK MÜŞTERİ VE ÇALIŞAN MEMNUNİYETİ PRENSİBİYLE ÜRETİM YAPAN KENAN METAL A.Ş., TENTE PERGOLA, İNŞAAT VE ÖZEL PROFİLLER GİBİ FARKLI SEKTÖRLERİN MEVCUT VE GELECEKTEKİ BEKLENTİLERİNİ KARŞILAYAN, ÇEVREYLE DOST ÜRETİM SİSTEMLERİNİ BENİMSEYEN, KÜRESEL ETKİLEŞİMLERİ YAKINDAN TAKİP EDEREK SÜREKLİ YENİLENEN, ÇAĞDAŞ BİR VİZYONLA GELİŞİYOR. ÜRÜN-KALİTE ÇİTASININ SÜREKLİ YÜKSEKİLMESİ, ÜRÜN YELPAZESİNİN GELİŞTİRİLMESİ, YENİ ÜRÜNLERİN TASARIMI, KULLANIM ALANLARININ ARTTIRILMASI İÇİN SÜREKLİ OLARAK ÇALIŞAN AR-GE BÖLÜMÜYLE GÖZ DOLDURAN KENAN METAL A.Ş., KALİTESİ GÜVENİLİRLİĞİ, KULLANDIĞI TEKNOLOJİ VE ÖZEL ÇÖZÜMLER ÜRETME GÜCÜYLE PAZAR PAYINI SÜREKLİ GENİŞLETİYOR.

KENAN METAL A.Ş., ALÜMİNYUM BAZLI ÜRÜNLERİN KALİTELERİNİ ARTTIRARAK VE KULLANIM ALANLARINI YAYGINLAŞTIRARAK DOĞAL VE ESTETİK MEKANLARIN YARATILMASINA DA ÖNCÜLÜK EDİYOR. HER YAPI İÇİN KENDİNE ÖZGÜ ÜSTÜN NİTELİKLİ VE İLERİ TEKNOLOJİ GEREKTİREN ÇAĞDAŞ ÇÖZÜMLER SUNAN KENAN METAL A.Ş., ESNEK YAKLAŞIMLARI ÜSTÜN HİZMET KALİTESİ VE FİYAT-KALİTE DENGESİYLE KÜRESEL PAZARDA SÖZ SAHİBİ BİR KURUM OLMA YOLUNDA EMİN ADIMLARLA İLERLİYOR.

## WHO ARE WE?

KENAN METAL IS ONE OF THE LEADING ALUMINUM FACTORIES OF OUR COUNTRY WHICH CONTINUES TO PRODUCE HIGH QUALITY ALUMINUM PROFILES WITH INCREASING STANDARDS EACH PASSING DAY. KENAN METAL WHICH MAKES PRODUCTION WITH ABSOLUTE CUSTOMER AND EMPLOYEE SATISFACTION PRINCIPLE, DEVELOPS WITH A MEDERN VISION THAT MEETS CURRENT AND FUTURE EXPECTATIONS OF DIFFERENT SECTORS SUCH AS AWNING PERGOLA, CONSTRUCTION AND SPECIAL PROFILES, ADOPTS ENVIRONMENTALLY FRIENDLY PRODUCTION SYSTEMS, RENEWS ITSELF CONSTANTLY BY FOLLOWING GLOBAL INTERACTIONS CLOSELY.

KENAN METAL WHICH MAKES A STRONG IMPRESSION WITH ITS R&D DEPARTMENT WORKING CON STANTLY FOR RAISING PRODUCT-QUALITY LEVEL, IMPROVING PRODUCT RANGE, DESIGNING NEW PRODUCTS, INCREASING USAGE AREAS, EXPANDS ITS MARKET SHARE CONSTANTLY WITH ITS QUALITY, CREDIBILITY TECHNOLOGY USED AND POWER TO PRODUCE SPECIAL SOLUTIONS KENAN METAL IS ALSO LEADING CREATION OF NATURAL AND AESTHETIC SPACES BY INCREASING QUALITY OF ALUMINUM-BASED PRODUCTS AND EXPANDING USAGE AREAS. KENAN METAL WHICH OFFERS ITS UNIQUE, SUPERIOR AND MODERN SOLUTIONS REQUIRING ADVANCED TECHNOLOGY FOR EVERY STRUCTURE, IS MOVING CONFIDENTLY ON ITS WAY TO BECAME A PROMISING COMPANY IN GLOBAL MARKET WITH ITS FLEXIBLE APPROACHES, SUPERIOR SERVICE QUALITY AND PRICE-QUALITY BALANCE.



**KENAN METAL®**





KENANMETAL.COM | INFO@KENANMETAL.COM | +90 212 485 60 35

GENEL MERKEZ : İOSB MH. ATATÜRK BLV. MAHMUT TORUN İŞ MERKEZİ NO: 54 KAT:1 34490 İKİTELLİ OSB / BAŞAKŞEHİR / İSTANBUL  
FABRİKA : VELİMEŞE MAHALLESİ, KANDİL CADDESİ, 329 SOKAK, DIŞ KAPI NO:7 ERGENE / TEKİRDAĞ

