


KENAN METAL


ARTMINYUM

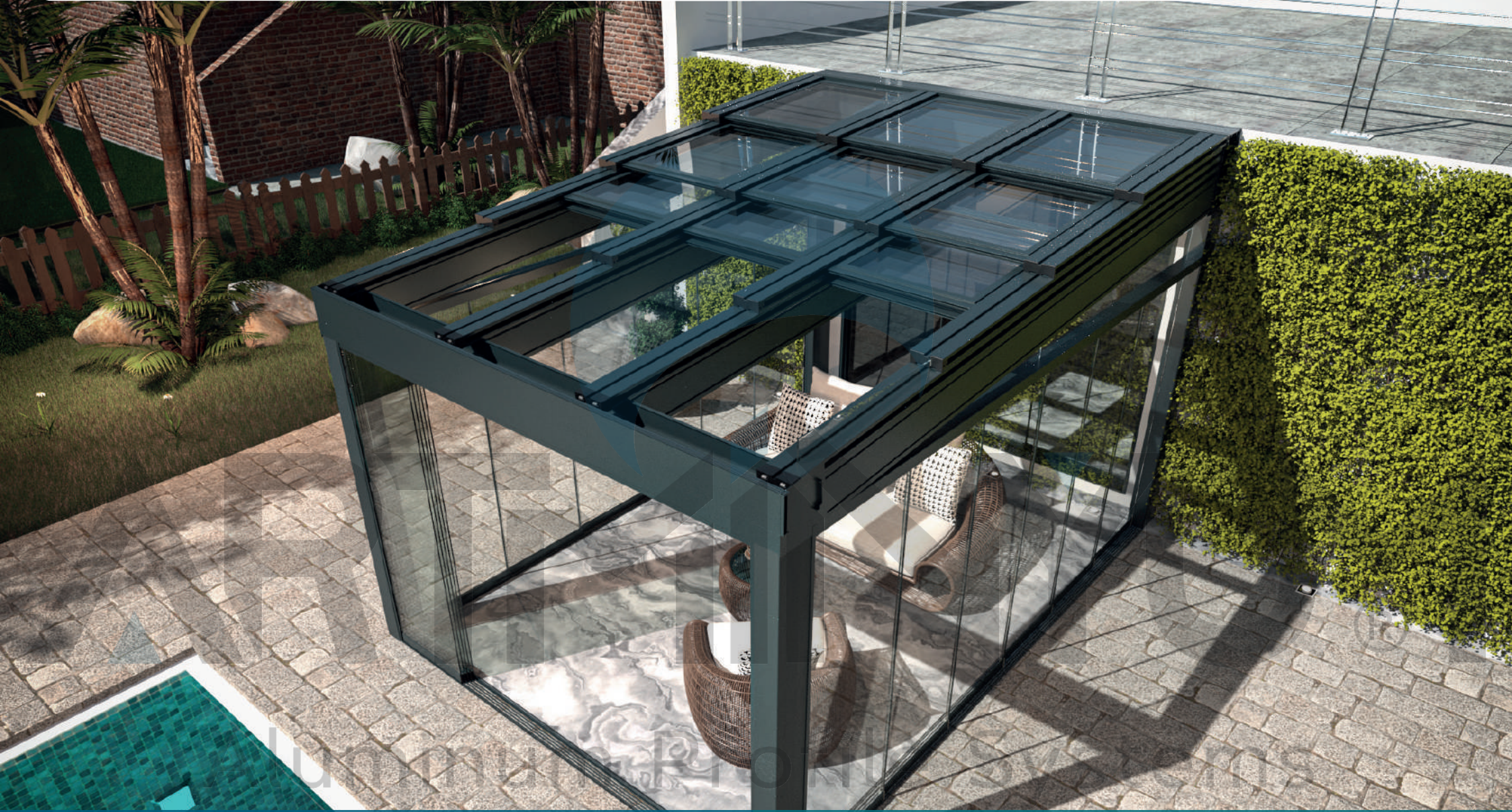

KENAN METAL
We Turn Aluminum Into The Art

AÇILIR CAM TAVAN SİSTEMLERİ

OPENING GLASS ROOF
SYSTEMS

AÇILIR CAM TAVAN SİSTEMLERİ

"OPENING GLASS ROOF SYSTEMS"



AÇILIR CAM TAVAN SİSTEMLERİNDE KULLANILAN CAMLAR, AÇILIR-KAPANIR ŞEKİLDE TASARLANMIŞTIR. BU CAMLAR, HAVALANDIRMAYI KONTROL ETMEK İÇİN AÇILIP KAPANABİLİR. AYNI ZAMANDA YAĞMUR, RÜZGAR VE DİĞER DİŞ ETKENLERE KARŞI KORUMA SAĞLAR.

AÇILIR CAM TAVAN , UZAKTAN KUMANDA SİSTEMLERİ İLE KONTROL EDİLEBİLİR. BU, KULLANICILARIN HAVA KOŞULLARINA ANINDA TEPKİ VEREBİLMELERİNİ SAĞLAR.

AÇILIR CAM TAVAN, MÜKEMMEL SU GEÇİRMEZLİK VE TERMAL İZOLASYON SAĞLAYARAK, İÇ MEKANDA KONFORLU BİR İKLİM OLUŞTURUR.

THE GLASSES USED IN RETRACTABLE GLASS ROOF SYSTEMS ARE DESIGNED TO OPEN AND CLOSE. THESE GLASSES CAN BE OPENED AND CLOSED TO CONTROL VENTILATION. AT THE SAME TIME, THEY PROVIDE PROTECTION AGAINST RAIN, WIND, AND OTHER EXTERNAL FACTORS.

THE RETRACTABLE GLASS ROOF CAN BE CONTROLLED WITH REMOTE CONTROL SYSTEMS. THIS ALLOWS USERS TO RESPOND INSTANTLY TO WEATHER CONDITIONS.

THE RETRACTABLE GLASS ROOF PROVIDES EXCELLENT WATERPROOFING AND THERMAL INSULATION, CREATING A COMFORTABLE CLIMATE INDOORS.



Outdoor Of Art
Dış Mekanda Sanat



ARTMİNYUM

ARTMİNYUM
Alüminyum Porselen



RAL RENK STANDARDINA GÖRE SEÇTİĞİNİZ TÜM RENKLER UYGULANABİLİR.

COLOURING OF YOUR CHOICE, ACCORDING TO THE RAL COLOUR STANDARD.



YAĞMUR VE RÜZGAR GİBİ HAVA ŞARTLARINA SON DERECE DAYANIKLIDIR.

IT IS EXTREMELY RESISTANT TO WEATHER CONDITIONS SUCH AS RAIN AND WIND.



MATERYAL // 6063 T5 ALÜMİNYUM, PASLANMAZ ÇELİK VE DERLİN.

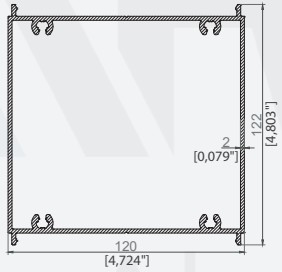
MATERIALS // 6063 T5 ALUMINUM, STAINLESS STEEL AND DERLIN.

İNCELİKLE SEÇİLMİŞ ALÜMİNYUM ALAŞIMIYLA ÜRETİLMİŞ, ZARAFETİ VE DAYANIKLILIĞIYLA DİKKAT ÇEKEN BİR ÜRÜNDÜR. MÜKEMMEL BİR ESTETİK SUNAN, MODERN VE ŞİK BİR TASARIMA SAHİPTİR. HER DETAYIYLA ZERAFET VE LÜKSÜ YANSITIR. YÜKSEK KALİTELİ MALZEMELER VE UZMAN İŞÇİLİKLE ÜRETİLMİŞ OLUP, UZUN ÖMÜRLÜ VE SAĞLAM BİR YAPIYA SAHİPTİR. MÜŞTERİNİN İSTEKLERİ DOĞRULTUSUNDA ÖZELLEŞTİRİLEBİLİR BOYUTLAR VE TASARIMLAR SUNAR, HER TÜRLÜ MEKANA UYUM SAĞLAR.

CRAFTED WITH CAREFULLY SELECTED ALUMINUM ALLOY, IT IS A PRODUCT THAT CAPTIVATES WITH ITS ELEGANCE AND DURABILITY.

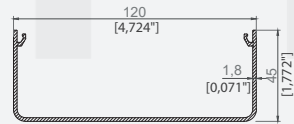
FEATURING A PERFECT AESTHETIC, IT BOASTS A MODERN AND STYLISH DESIGN. EVERY DETAIL REFLECTS ELEGANCE AND LUXURY. MADE WITH HIGH-QUALITY MATERIALS AND EXPERT CRAFTSMANSHIP, IT POSSESSES A LONG-LASTING AND ROBUST STRUCTURE. IT OFFERS CUSTOMIZABLE DIMENSIONS AND DESIGNS ACCORDING TO CUSTOMER PREFERENCES, SUITING ANY TYPE OF SPACE.





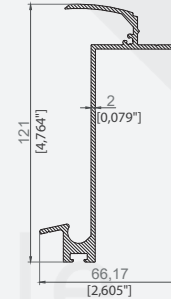
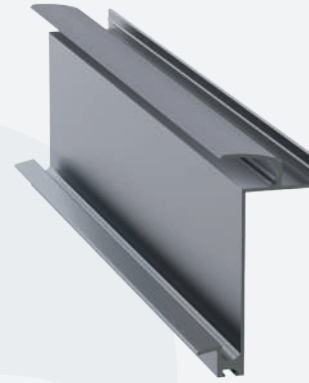
DİKME PROFİLİ
PILLAR PROFILE

ÜRÜN KODU / PRODUCT CODE	2341
AĞIRLIK / WEIGHT	3,028 KG/M 6,676 LB/M



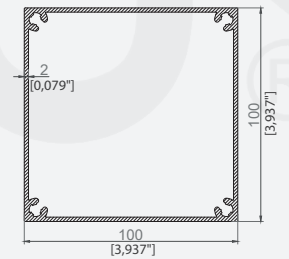
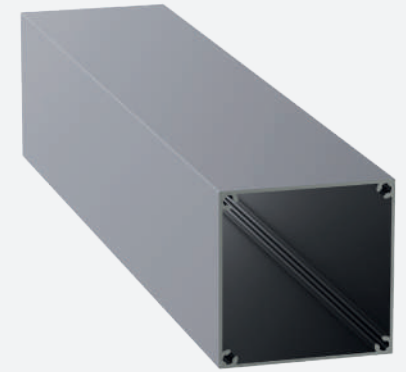
DİKME KAPAK PROFİLİ
PILLAR COVER PROFILE

ÜRÜN KODU / PRODUCT CODE	2342
AĞIRLIK / WEIGHT	1,055 KG/M 2,326 LB/M



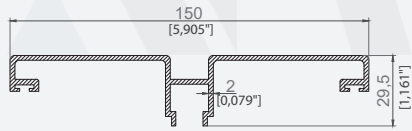
AYARLANABİLİR RAY PROFİLİ
ADJUSTABLE RAIL PROFILE

ÜRÜN KODU / PRODUCT CODE	2927
AĞIRLIK / WEIGHT	1,529 KG/M 3,371 LB/M



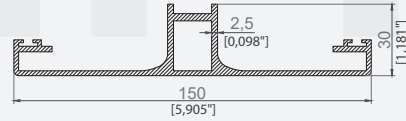
DİKME PROFİLİ
PILLAR PROFILE

ÜRÜN KODU / PRODUCT CODE	6565
AĞIRLIK / WEIGHT	2,463 KG/M 5,43 LB/M



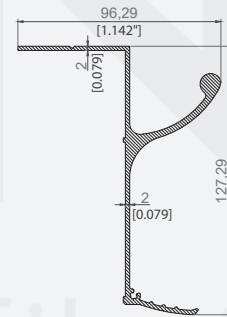
ÜST RAY PROFİLİ
TOP RAIL PROFILE

ÜRÜN KODU / PRODUCT CODE	2923
AĞIRLIK / WEIGHT	1,453 KG/M 3,203 LB/M



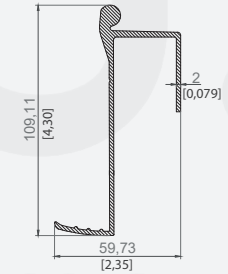
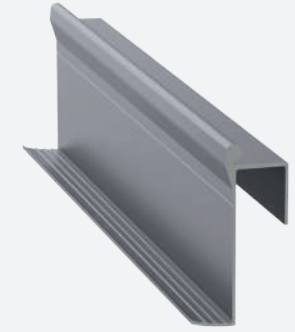
ALT RAY PROFİLİ
BOTTOM RAIL PROFILE

ÜRÜN KODU / PRODUCT CODE	2924
AĞIRLIK / WEIGHT	1,772 KG/M 3,907 LB/M



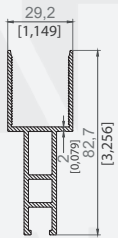
ARKA KAYIT BAĞLANTI RAY PROFİLİ
BACK BEAM CONNECTION RAIL PROFILE

ÜRÜN KODU / PRODUCT CODE	2929
AĞIRLIK / WEIGHT	1,924 KG/M 4,242 LB/M



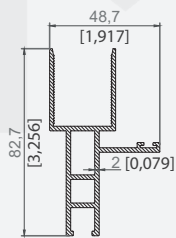
DERE BAĞLANTI RAY PROFİLİ
RAIL-GUTTER CONNECTION PROFILE

ÜRÜN KODU / PRODUCT CODE	2928
AĞIRLIK / WEIGHT	1,453 KG/M 3,203 LB/M



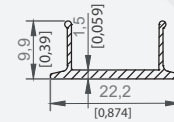
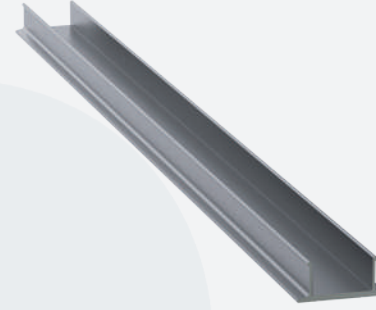
CAM PANEL KASA PROFİLİ
GLASS PANEL SIDE PROFILE

ÜRÜN KODU / PRODUCT CODE	2502
AĞIRLIK / WEIGHT	1,122 KG/M 2,474 LB/M



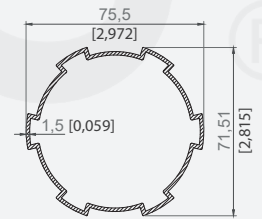
PANEL ÇEKİCİ PROFİLİ
PANEL PULLER PROFILE

ÜRÜN KODU / PRODUCT CODE	2503
AĞIRLIK / WEIGHT	1,300 KG/M 2,866 LB/M



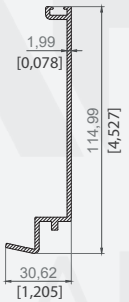
AYARLANABİLİR RAY PROFİL KAPAĞI
ADJUSTABLE RAIL PROFILE COVER

ÜRÜN KODU / PRODUCT CODE	2926
AĞIRLIK / WEIGHT	0,119 KG/M 0,262 LB/M



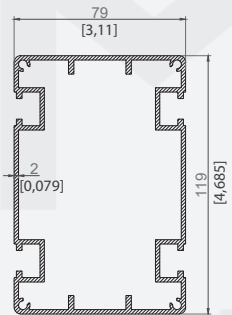
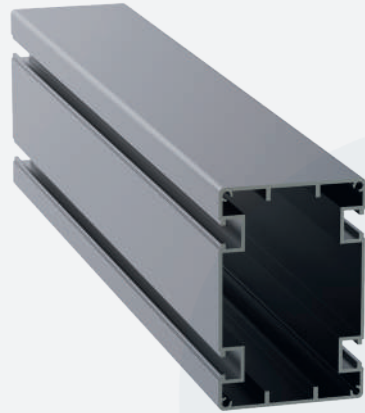
MOTOR BORUSU
MOTOR TUBE

ÜRÜN KODU / PRODUCT CODE	5312
AĞIRLIK / WEIGHT	1,100 KG/M 2,425 LB/M



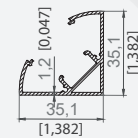
DERE EK PROFİLİ
GUTTER ATTACHMENT PROFILE

ÜRÜN KODU / PRODUCT CODE	3725
AĞIRLIK / WEIGHT	0,886 KG/M 1,953 LB/M



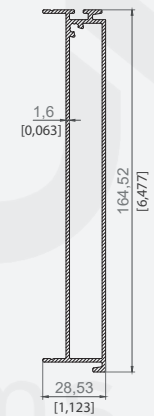
TAŞIYICI PROFİL
CARRIER PROFILE

ÜRÜN KODU / PRODUCT CODE	5936
AĞIRLIK / WEIGHT	3,032 KG/M 6,684 LB/M



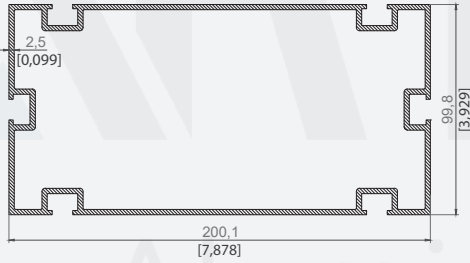
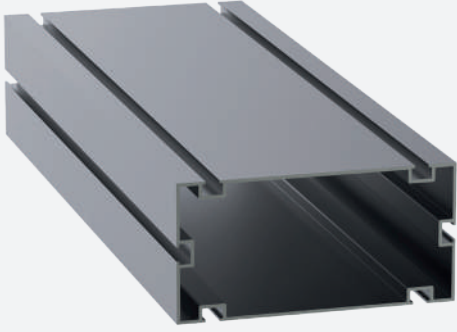
LEF PROFİLİ
LED PROFILE

ÜRÜN KODU / PRODUCT CODE	2953
AĞIRLIK / WEIGHT	0,445 KG/M 0,981 LB/M



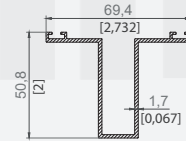
DERE UZATMA PROFİLİ
GUTTER EXTENTION PROFILE

ÜRÜN KODU / PRODUCT CODE	2338
AĞIRLIK / WEIGHT	1,730 KG/M 3,814 LB/M



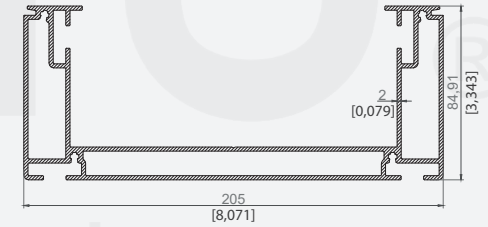
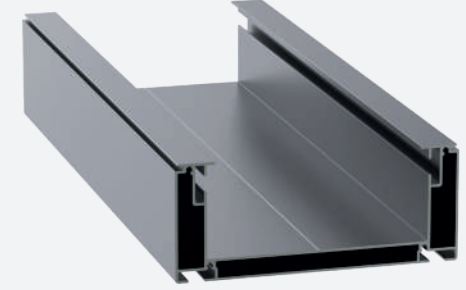
ARKA KAYIT PROFİLİ
BACK BEAM PROFILE

ÜRÜN KODU / PRODUCT CODE	2930
AĞIRLIK / WEIGHT	4,949 KG/M 10,911 LB/M



PANEL KAVRAMA PROFİLİ
PANEL HOLDER PROFILE

ÜRÜN KODU / PRODUCT CODE	2925
AĞIRLIK / WEIGHT	0,794 KG/M 1,75 LB/M



DERE PROFİLİ
GUTTER PROFILE

ÜRÜN KODU / PRODUCT CODE	2337
AĞIRLIK / WEIGHT	4,560 KG/M 10,053 LB/M



AÇILIR CAM TAVAN
AKSESUAR TEKLİ RAY
SETİ
KOD : ACT-1
OPENING GLASS
ROOF ACCESSORY SINGLE
SET
KOD : ACT-1

KOD / CODE ADET / PIECE	ACT-1-1 1	KOD / CODE ADET / PIECE	ACT-1-2 1	KOD / CODE ADET / PIECE	ACT-1-3 1	KOD / CODE ADET / PIECE	LTS-01-15 1	KOD / CODE ADET / PIECE	ACT-1-5 2



















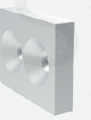
KOD / CODE ADET / PIECE	ACT-1-6 1	KOD / CODE ADET / PIECE	ACT-1-7 1	KOD / CODE ADET / PIECE	PRG-117 2	KOD / CODE ADET / PIECE	PAL-135 2	KOD / CODE ADET / PIECE	ACT-1-10 1

KOD / CODE ADET / PIECE	ACT-1-11 1	KOD / CODE ADET / PIECE	PAL-112 4	KOD / CODE ADET / PIECE	ACT-1-12 2	KOD / CODE ADET / PIECE	ACT-1-13 10	KOD / CODE ADET / PIECE	ACT-1-14 8

KOD / CODE ADET / PIECE	ACT-1-15 4	KOD / CODE ADET / PIECE	ACT-1-16 4	KOD / CODE ADET / PIECE	ACT-1-7A 2	KOD / CODE ADET / PIECE	ACT-1-7B 2



AÇILIR CAM TAVAN
AKSESUAR ÇİFTLİ RAY
SETİ
KOD : ACT-2
OPENING GLASS
ROOF ACCESSORY DOUBLE
SET
KOD : ACT-2

 <p>ARKA RULMAN YATAĞI SAĞ / SOL REAR ROLLER HOUSING RIGHT / LEFT</p> <p>KOD / CODE ADET / PIECE</p>	<p>ACT-2-1 2</p>	 <p>TRİGER DİŞLİ TIMING GEAR</p> <p>KOD / CODE ADET / PIECE</p>	<p>ACT-2-2 2</p>	 <p>TRİGER SIKIŞTIRMA APARATI TIMING COMPRESSION APPARATUS</p> <p>KOD / CODE ADET / PIECE</p>	<p>ACT-2-3 2</p>	 <p>20X50 KAYIŞ YÖN VERME PLASTİĞİ 20X50 BELT STEERING PLASTIC</p> <p>KOD / CODE ADET / PIECE</p>	<p>LTS-01-15 2</p>	 <p>T10X20 TRİGER KAYIŞ ÖN SABİTLEME APARAT TAKIMI T10X20 TIMING BELT FRONT FIXING APPARATUS SET</p> <p>KOD / CODE ADET / PIECE</p>	<p>ACT-2-5 4</p>
 <p>ÖN GERGİ APARAT TAKIMI PRE-TENSIONER APPARATUS SET</p> <p>KOD / CODE ADET / PIECE</p>	<p>ACT-2-6 1</p>	 <p>ARKA RULMAN YATAĞI SABİTLEME APARATI REAR ROLLER BEARING FIXING APPARATUS</p> <p>KOD / CODE ADET / PIECE</p>	<p>ACT-2-7 1</p>	 <p>BÜYÜK RULMAN PLASTİĞİ LARGE BEARING PLASTIC</p> <p>KOD / CODE ADET / PIECE</p>	<p>PRG-117 4</p>	 <p>6001 ZZ RULMAN 6001 ZZ BEARING</p> <p>KOD / CODE ADET / PIECE</p>	<p>PAL-135 4</p>	 <p>10X10 KARE MİL 10X10 SQUARE MILE</p> <p>KOD / CODE ADET / PIECE</p>	<p>ACT-2-10 2</p>
 <p>8X63 MİL 8X63 MILE</p> <p>KOD / CODE ADET / PIECE</p>	<p>ACT-2-11 2</p>	 <p>M6X12 HAVŞA BAŞLI CIVATA M6X12 COUNTERSUNK BOLT</p> <p>KOD / CODE ADET / PIECE</p>	<p>PAL-112 4</p>	 <p>M6X60 AKV VIDA M6X60 AKV SCREW</p> <p>KOD / CODE ADET / PIECE</p>	<p>ACT-2-12 4</p>	 <p>3,9X16 AKILLI VIDA 3,9X16 SMART SCREW</p> <p>KOD / CODE ADET / PIECE</p>	<p>ACT-2-13 20</p>	 <p>3,9X45 AKILLI VIDA 3,9X45 SMART SCREW</p> <p>KOD / CODE ADET / PIECE</p>	<p>ACT-2-14 16</p>
 <p>M6X150 İMBUS VIDA M6X150 İMBUS SCREW</p> <p>KOD / CODE ADET / PIECE</p>	<p>ACT-2-15 4</p>	 <p>M6 FİBER SOMUN M6 FİBER NUT</p> <p>KOD / CODE ADET / PIECE</p>	<p>ACT-2-16 4</p>	 <p>ARKA RULMAN YATAĞI SABİTLEME APARATI(A) REAR BEARING HOUSING FIXING APPARATUS(A)</p> <p>KOD / CODE ADET / PIECE</p>	<p>ACT-2-7A 2</p>	 <p>ARKA RULMAN YATAĞI SABİTLEME APARATI(B) REAR BEARING HOUSING FIXING APPARATUS(B)</p> <p>KOD / CODE ADET / PIECE</p>	<p>ACT-2-7B 2</p>		



AAÇILIR CAM TAVAN
AKSESUARLARI

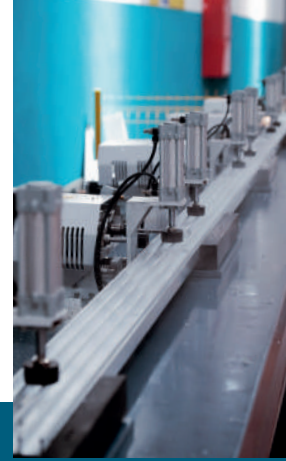
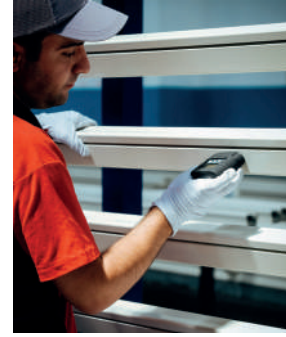
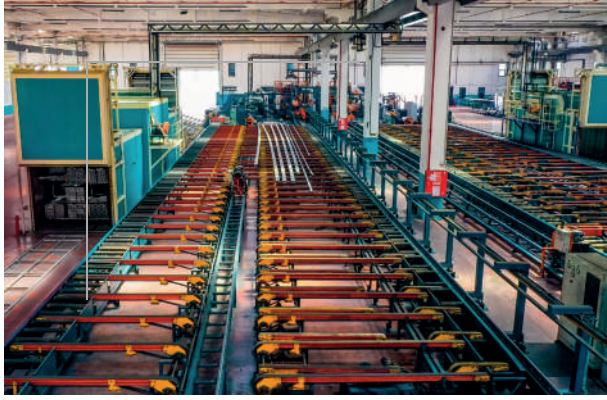
OPENING GLASS
ROOF ACCESSORIES

KÖŞE ÇAVUŞ BAĞLANTI CORNER SERGEANT CONNECTION	TEKER WHEEL	T10X20 TRİGER KAYIŞ T10X20 TIMING BELT	CAM KASA STOP APARATI GLASS CASE STOP APPARATUS	RAY KAPAĞI APARATI RAIL COVER APPARATUS	MOTOR SABİTLEME APARATI MOTOR FASTENING APPARATUS				
KOD / CODE ADET / PIECE	ACT-3 -	KOD / CODE ADET / PIECE	ACT-4 -	KOD / CODE ADET / PIECE	ACT-5 -	KOD / CODE ADET / PIECE	ACT-6 -	KOD / CODE ADET / PIECE	ACT-7 -

RAY MOTOR SABİTLEME APARATI RAIL MOTOR FASTENING APPARATUS	DİREK ALT BAĞLANTI APARATI PILLAR BOTTOM CONNECTION APPARATUS	DİREK ÜST BAĞLANTI APARATI PILLAR TOP CONNECTION APPARATUS	3.9X16 AKILLI VIDA 3.9X16 SMART SCREW	OLLUK YAN SACI GROOVE SIDE SHEET	67X1200 KİL FITİL 67X1200 BRISTLE ROVING	OLLUK EPDM H20MM BALON CONTASI GROOVE EPDM H20MM BALLOON GASKET							
KOD / CODE ADET / PIECE	ACT-18 -	KOD / CODE ADET / PIECE	ACT-8 -	KOD / CODE ADET / PIECE	ACT-9 -	KOD / CODE ADET / PIECE	ACT-13 -	KOD / CODE ADET / PIECE	ACT-11 -	KOD / CODE ADET / PIECE	SRM-24 -	KOD / CODE ADET / PIECE	ACT-12 -

3.9X32 AKILLI VIDA 3.9X32 SMART SCREW	M8X16 AKV VIDA M8X16 AKV SCREW	M6X10 İMBUS VIDA M6X10 İMBUS SCREW	DİREK BAĞLANTI LAMASI(M8 2 DELİKLİ 25X109) PILLAR CONNECTION FLANGE (M8 2 HOLE 25X109)	M8X16 HB İMBUS VIDA M8X16 HB İMBUS SCREW	M8 FİBER SOMUN M8 FİBER NUT	SOMFY 120 NM MOTOR VE AKSESUAR SOMFY 120 NM MOTOR AND ACCESSORY							
KOD / CODE ADET / PIECE	ACT-14 -	KOD / CODE ADET / PIECE	ACT-16 -	KOD / CODE ADET / PIECE	ACT-15 -	KOD / CODE ADET / PIECE	ACT-10 -	KOD / CODE ADET / PIECE	ACT-17 -	KOD / CODE ADET / PIECE	PAL-118 -	KOD / CODE ADET / PIECE	RTS120 -

SOMFY KUMANDA SOMFY CONTROLLER	LED SONLAMA APARATI LED TERMINATION APPARATUS	LED KÖŞE BİRLEŞİM APARATI LED CORNER CONNECTION APPARATUS	İZOLELİ LED INSULATED LED	ROLLING ROOF DİFÜZÖR KAPAĞI ROLLING ROOF DIFFUSER COVER	KONTROL ÜNİTESİ UNIVERSAL CONTROL UNIT UNIVERSAL	KONTROL ÜNİTESİ SOMFY UYUMLU COMPATIBLE WITH SOMFY CONTROL UNIT							
KOD / CODE ADET / PIECE	RTS-KM-5 -	KOD / CODE ADET / PIECE	ROLL-25 -	KOD / CODE ADET / PIECE	ACT-21 -	KOD / CODE ADET / PIECE	ACT-24 -	KOD / CODE ADET / PIECE	ROLL-35 -	KOD / CODE ADET / PIECE	ACT-21 -	KOD / CODE ADET / PIECE	ACT-20 -



Biz kimiz ?

ÜSTÜN KALİTELİ ALÜMİNYUM PROFİL ÜRETİMİNİ HER GEÇEN GÜN ARTAN STANDARTLARLA DEVAM ETTİREN KENAN METAL A.Ş. ÜLKEMİZİN ÖNDE GELEN ALÜMİNYUM FABRİKALARINDAN BİRİDİR. MUTLAK MÜŞTERİ VE ÇALIŞAN MEMNUNİYETİ PRENSİBİYLE ÜRETİM YAPAN KENAN METAL A.Ş., TENTE PERGOLA, İNŞAAT VE ÖZEL PROFİLLER GİBİ FARKLI SEKTÖRLERİN MEVCUT VE GELECEKTEKİ BEKLENTİLERİNİ KARŞILAYAN, ÇEVREYLE DOST ÜRETİM SİSTEMLERİNİ BENİMSEYEN, KÜRESEL ETKİLEŞİMLERİ YAKINDAN TAKİP EDEREK SÜREKLİ YENİLENEN, ÇAĞDAŞ BİR VİZYONLA GELİŞİYOR. ÜRÜN-KALİTE ÇİTASININ SÜREKLİ YÜKSEKİLMESİ, ÜRÜN YELPAZESİNİN GELİŞTİRİLMESİ, YENİ ÜRÜNLERİN TASARIMI, KULLANIM ALANLARININ ARTTIRILMASI İÇİN SÜREKLİ OLARAK ÇALIŞAN AR-GE BÖLÜMÜYLE GÖZ DOLDURAN KENAN METAL A.Ş., KALİTESİ GÜVENİLİRLİĞİ, KULLANDIĞI TEKNOLOJİ VE ÖZEL ÇÖZÜMLER ÜRETME GÜCÜYLE PAZAR PAYINI SÜREKLİ GENİŞLETİYOR.

KENAN METAL A.Ş., ALÜMİNYUM BAZLI ÜRÜNLERİN KALİTELERİNİ ARTTIRARAK VE KULLANIM ALANLARINI YAYGINLAŞTIRARAK DOĞAL VE ESTETİK MEKANLARIN YARATILMASINA DA ÖNCÜLÜK EDİYOR. HER YAPI İÇİN KENDİNE ÖZGÜ ÜSTÜN NİTELİKLİ VE İLERİ TEKNOLOJİ GEREKTİREN ÇAĞDAŞ ÇÖZÜMLER SUNAN KENAN METAL A.Ş., ESNEK YAKLAŞIMLARI ÜSTÜN HİZMET KALİTESİ VE FİYAT-KALİTE DENGESİYLE KÜRESEL PAZARDA SÖZ SAHİBİ BİR KURUM OLMA YOLUNDA EMİN ADIMLARLA İLERLİYOR.

WHO ARE WE?

KENAN METAL IS ONE OF THE LEADING ALUMINUM FACTORIES OF OUR COUNTRY WHICH CONTINUES TO PRODUCE HIGH QUALITY ALUMINUM PROFILES WITH INCREASING STANDARDS EACH PASSING DAY. KENAN METAL WHICH MAKES PRODUCTION WITH ABSOLUTE CUSTOMER AND EMPLOYEE SATISFACTION PRINCIPLE, DEVELOPS WITH A MEDERN VISION THAT MEETS CURRENT AND FUTURE EXPECTATIONS OF DIFFERENT SECTORS SUCH AS AWNING PERGOLA, CONSTRUCTION AND SPECIAL PROFILES, ADOPTS ENVIRONMENTALLY FRIENDLY PRODUCTION SYSTEMS, RENEWS ITSELF CONSTANTLY BY FOLLOWING GLOBAL INTERACTIONS CLOSELY.

KENAN METAL WHICH MAKES A STRONG IMPRESSION WITH ITS R&D DEPARTMENT WORKING CON STANTLY FOR RAISING PRODUCT-QUALITY LEVEL, IMPROVING PRODUCT RANGE, DESIGNING NEW PRODUCTS, INCREASING USAGE AREAS, EXPANDS ITS MARKET SHARE CONSTANTLY WITH ITS QUALITY, CREDIBILITY TECHNOLOGY USED AND POWER TO PRODUCE SPECIAL SOLUTIONS KENAN METAL IS ALSO LEADING CREATION OF NATURAL AND AESTHETIC SPACES BY INCREASING QUALITY OF ALUMINUM-BASED PRODUCTS AND EXPANDING USAGE AREAS. KENAN METAL WHICH OFFERS ITS UNIQUE, SUPERIOR AND MODERN SOLUTIONS REQUIRING ADVANCED TECHNOLOGY FOR EVERY STRUCTURE, IS MOVING CONFIDENTLY ON ITS WAY TO BECAME A PROMISING COMPANY IN GLOBAL MARKET WITH ITS FLEXIBLE APPROACHES, SUPERIOR SERVICE QUALITY AND PRICE-QUALITY BALANCE.



KENAN METAL®





KENANMETAL.COM | INFO@KENANMETAL.COM | +90 212 485 60 35

GENEL MERKEZ : İOSB MH. ATATÜRK BLV. MAHMUT TORUN İŞ MERKEZİ NO: 54 KAT:1 34490 İKİTELLİ OSB / BAŞAKŞEHİR / İSTANBUL
FABRİKA : VELİMEŞE MAHALLESİ, KANDİL CADDESİ, 329 SOKAK, DIŞ KAPI NO:7 ERGENE / TEKİRDAĞ

